



**Ford, Super Duty (23-On), sPOD Kit
87-0140, 87-0141, 87-0142**



2950 Norman Strasse San Marcos, CA 92069

Phone 661-775-7799 • Fax 760-560-0383

tech@4x4s-pod.com • www.4x4spod.com



Warranty & Returns Policy

WARRANTY AND REPAIR POLICY

sPOD offers a non-transferable 5-year limited warranty on electronic parts and components from manufacturers defects from the date of purchase (Effective on products purchased after 4/1/23). sPOD will repair or replace items in question and return them to Buyer at no charge. If the identical product is no longer available, sPOD will replace with a similar product of equal value. sPOD will not be responsible for any indirect or consequential damages in connection with defective merchandise.

Exclusions:

Products that have been subjected to abuse, misuse, accident, alteration, modification, improper installation, tampering, or any use other than the product's designed purpose will void the warranty. The sPOD warranty excludes the following: Installation errors, abuse, misuse or crash damage, reverse polarity of battery cables, changing the 2 amp fuse for any other rated fuse, cutting off our connectors, splicing into our wires/harnesses, attaching anything other than our battery cables to our positive and negative terminal studs on our BantamX/SourceLT boards, changing our supplied switches (switch body), removing the actuators without using our specific actuator removal tool. This warranty shall be automatically voided if the items sent for warranty replacement are modified in any way or were not used as intended or applicable. Additionally, this warranty excludes normal wear and tear. NOTE: Any or all aftermarket brake controllers, hi-amp solenoids or any hi-amp relay that is attached to the same positive battery post will cause irreversible damage to the sPOD system. This will void all warranties. This warranty shall be automatically voided if the items sent for warranty replacement are returned with water/liquid/chemical damage to any electrical component.

The buyer MUST provide a copy of the original invoice or have completed the online product registration. Shipping responsibilities and/or charges will be determined once a claim has been opened. sPOD systems will be repaired or replaced at manufacturer's discretion. This warranty does not cover miscellaneous expenses, including, but not limited to, outside labor costs incurred for the installation, removal, replacement, and repair or troubleshooting. **Please contact sPOD to assist with troubleshooting prior to uninstalling your entire system as the solution may not require that the system be removed.**

All claims must be made in writing by mail or e-mail directly to sPOD:

By Mail: sPOD 2950 Norman Strasse Road San Marcos, CA 92069

By E-mail: Tech@4x4s-pod.com



RETURN AND REFUND POLICY

sPOD will accept returns within 30 days from receipt of merchandise under the following conditions: Merchandise needs to be returned unused, with all printed material and accessories enclosed. If not in its original condition or the product shows signs of installation, additional charges will be applied or may not be accepted. All returns must be accompanied with a return merchandise authorization (RMA) number (to be provided by sPOD at time of request) and a receipt of original purchase.

To obtain an RMA number, please email Tech@4x4S-pod.com with your full name, invoice number, and part number of the item(s) you need to return.

A 15% percent restocking fee will apply after 30 days. All shipping charges are at the buyer's expense. The original shipping fees are non-refundable. We strongly recommend you insure all packages before shipping. We are not responsible for lost or stolen merchandise while in transit. We assume liability once the returned system has reached our facilities. Once your return shipment has been received and approved, your return will be processed. Failure to comply with the process and terms stated above may result in a processing delay and/or a refusal of the returned package.



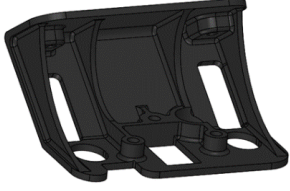
The above warranties and policies are subject to change without prior notice.

****For a color copy of instructions, visit your vehicle specific application on BajaDesigns.com ****

Required Tool(s):

- 13mm wrench
 - 10mm, 7/16" socket
 - Trim removal tools
 - T10, T20 Torx
- 2.5mm, 3mm Hex key

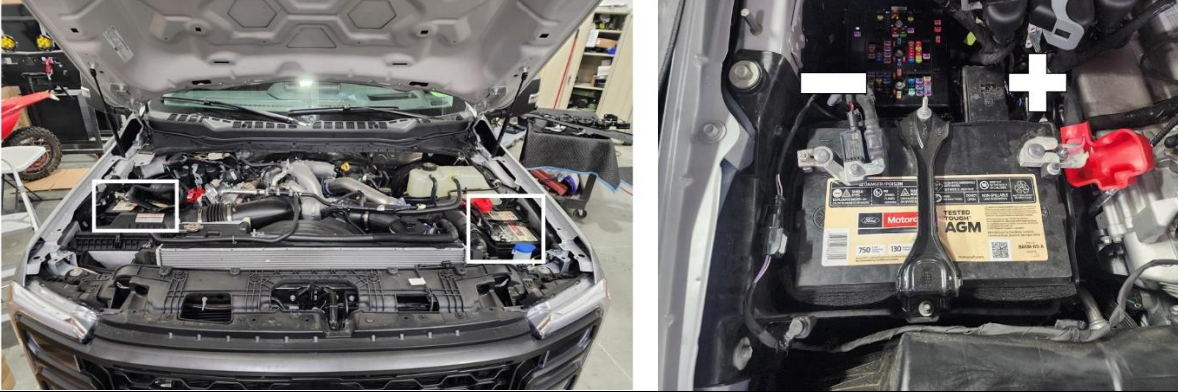
Parts List:

 <p>(Qty: 1) PCM w/ Bracket and Battery Cables Attached</p>	 <p>(91-0005) (Qty: 1) 15' Ethernet Cable</p>	 <p>(Qty: 1) Controller w/ Overhead Mount Bezel attached</p>	 <p>(87-0002) (Qty: 1) Overhead Mounting Bracket</p>
 <p>(91-0001) (Qty: 1) 1' Ethernet Cable Extension</p>			

To begin, make sure the vehicle is in park, on level ground and the parking brake is engaged.

Step 1:

With a 10mm socket, disconnect the negative battery cable from both batteries (boxed). Ensure the cables are secured in such a way that they cannot touch the negative terminal.



Step 2:

With a 13mm wrench, loosen the two bolts that hold the battery box to the fender (circled). A ratcheting wrench is recommended. Slide the PCM bracket between the battery box and fender and retighten the bolts.



Step 3:

Open the driver's door and pull down on the weather stripping to remove it. Remove the driver side dash endcap panel by pulling from the bottom and working up the piece. Place aside for now. With a pick, remove the drivers side grab handle trim by prying it loose starting at the small hole on the bottom.



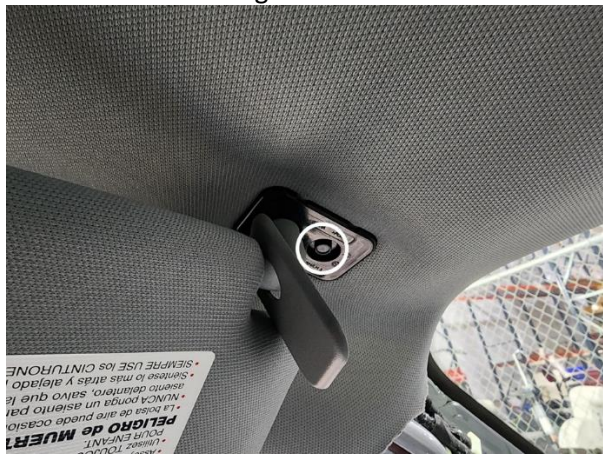
Step 4:

With a 10mm socket, remove the two bolts securing the A-pillar trim. Pull the panel up and inwards to remove it. Disconnect the speaker connector if equipped.



Step 5:

Open the sun visor and swing it to the side. Use a trim removal tool to remove the small trim panel and with a 10mm socket, remove the bolt securing the visor to the roof. Remove the visor.



Step 6:

Grip the inside edge of the sunglasses holder and with mild force, pull the unit down until the clips release. Unhook the rear edge near the windshield. Use the trim tool until all the clips are free and then carefully disconnect the electrical connection/connections. Place assembly on a soft work surface.



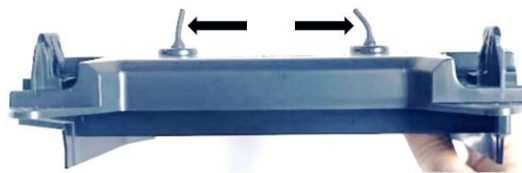
Step 7:

Remove the six circled screws with the T20 Torx bit. Remove the electrical accessory module from the console inner cover (if equipped).



Step 8:

Remove the inner cover from the console assembly. Locate the two rubber plugs. These locations will be where the sPOD mounting bracket attaches to the console. Pull the two plugs out of the holes.



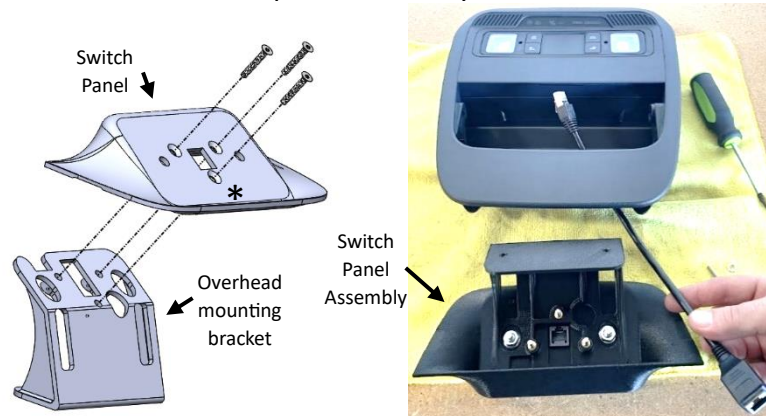
Step 9:

With the T10 Torx bit, remove the small screw (circled) and then use the small flathead to remove the plastic spacer it screws into. Open the sunglass holder and compress the holder in the direction shown until the pivoting mount is freed. Place the holder aside and replace the inner cover with the T20 Torx and six bolts from step 7.



Step 10:

Locate the sPOD overhead mounting bracket and switch panel fascia. With the 2.5mm Hex key and the provided flathead hardware (3x), mount the fascia as shown. Mount the sPOD switch panel using the 7/16" socket and the nuts on the back of the controller. Logo should face the side shown by the asterisk (*). With the provided short ethernet cable adapter, route it into the console as shown and plug it into the switch panel assembly.

**Step 11:**

With the provided socket head hardware and washers, mount the assembly using the holes from step 8 with the 3mm Hex key. Reattach the electrical module and place aside for now.

**Step 12:**

With the provided 15' Ethernet cable, route it through the upper console opening and out of the headliner at the windshield as shown. Connect the long ethernet cable to the small cable from step 10 on the console. Replace the electrical connectors from step 7. Hook the front edge of the assembly and then carefully snap it back up into the roof.



Step 13:

Continue across the windshield and down the A-pillar taking special care to not interfere with the airbag. Route through the dash and pull the slack through. Continue down through the dash endcap area and cross through to behind the hood latch panel. Pull slack through. Now replace everything from steps 3-5.

**Step 14:**

Route ethernet cable through the firewall passthrough into the engine compartment. Pull the slack into the engine compartment and route the cable to the PCM. Secure the cable with zip ties.

**Step 15:**

Route the cable through one of the slots in the PCM and plug it in. Run the main power cables along the firewall to the PS battery. Using a 10mm socket, connect the red ring terminal to the positive battery cable and the black to the negative battery cable. Reconnect all battery cables.



*Tie all wires away from sharp, hot, and/or rotating components.

* Re-torque all the fasteners after 100 miles.

*Your install is now complete! Thank you for choosing sPOD.