




**Installation Instructions**  
XL Standard (Pro)

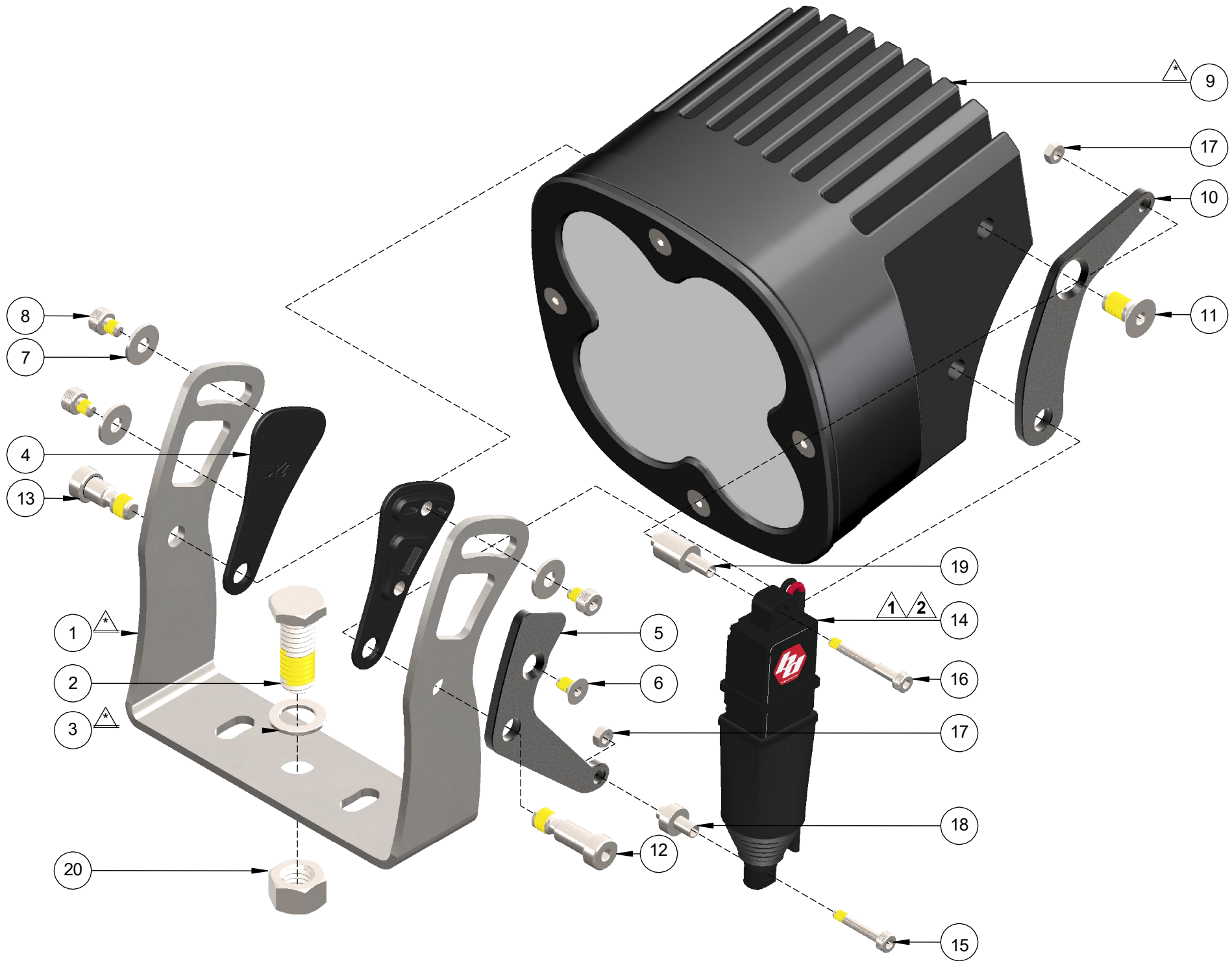
BILL OF MATERIALS XL Standard (Pro)			
	ITEM NO.	DESCRIPTION	QTY.
STEP 1	1	XL Bracket 	2
	2	3/8"-16 X 1" Hex Low Head Screw	1
	3	3/8" Washer 	1
STEP 2	4	Thrust Insert, XLS(P)	2
	5	Mount Plate, XLS(P)	1
	6	M4 X 7mm Flat Head Cap Screw	1
	7	M4 Oversized Washer	3
	8	M4 X 5mm Socket Head Cap Screw	3
STEP 3	9	XL Standard (Pro) Housing 	2
	10	Pivot Plate, XLS(P)	1
	11	1/4"-20 X 1/2" Flat Head Cap Screw, Undercut	1
STEP 4	12	Ø1/4" X .480" Shoulder Screw	1
	13	Ø1/4" X .240" Shoulder Screw	1
STEP 5	14	12V Actuator	1
	15	M3 X 18mm Socket Head Cap Screw	1
	16	M3 X 26mm Socket Head Cap Screw	1
	17	M3 Nut	2
	18	M3 Screw Spacer, Shoulder Type 1, 3mm L	1
	19	M3 Screw Spacer, Shoulder Type 2, 10mm L	1
STEP 6	20	3/8"-16 Nut	1

NOTES:

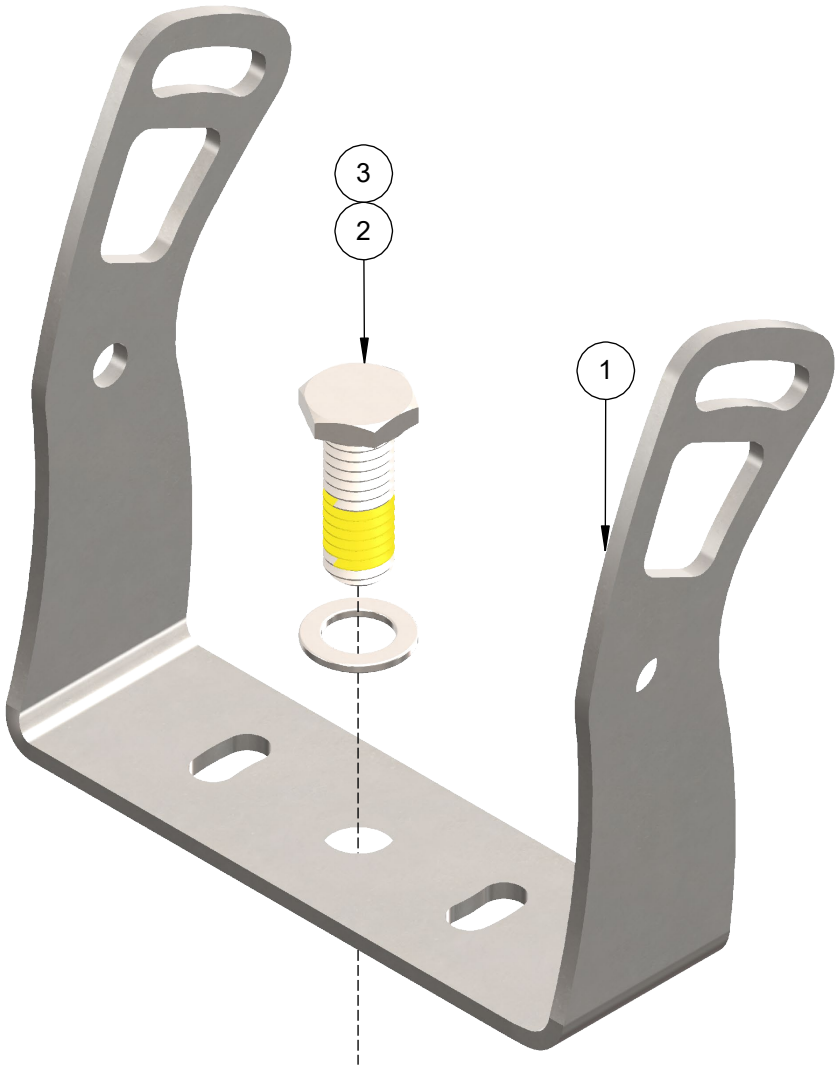
- **1.** Actuator cannot be moved manually.  
Forcing the actuator up or down will damage the actuator and void the limited lifetime warranty
- **2.** Actuators can be synced when used in multiples.  
Move actuator fully down or fully up to home and resync.
- **\*** This item not included in kit.

TOOLS NEEDED

- 2.5mm HEX WRENCH
- 3mm HEX WRENCH
- 5.5mm WRENCH
- 9/16" WRENCH (2X)



	ITEM NO.	DESCRIPTION	QTY.
STEP 1	1	XL Bracket	2
	2	3/8"-16 X 1" Hex Low Head Screw	1
	3	3/8" Washer	1

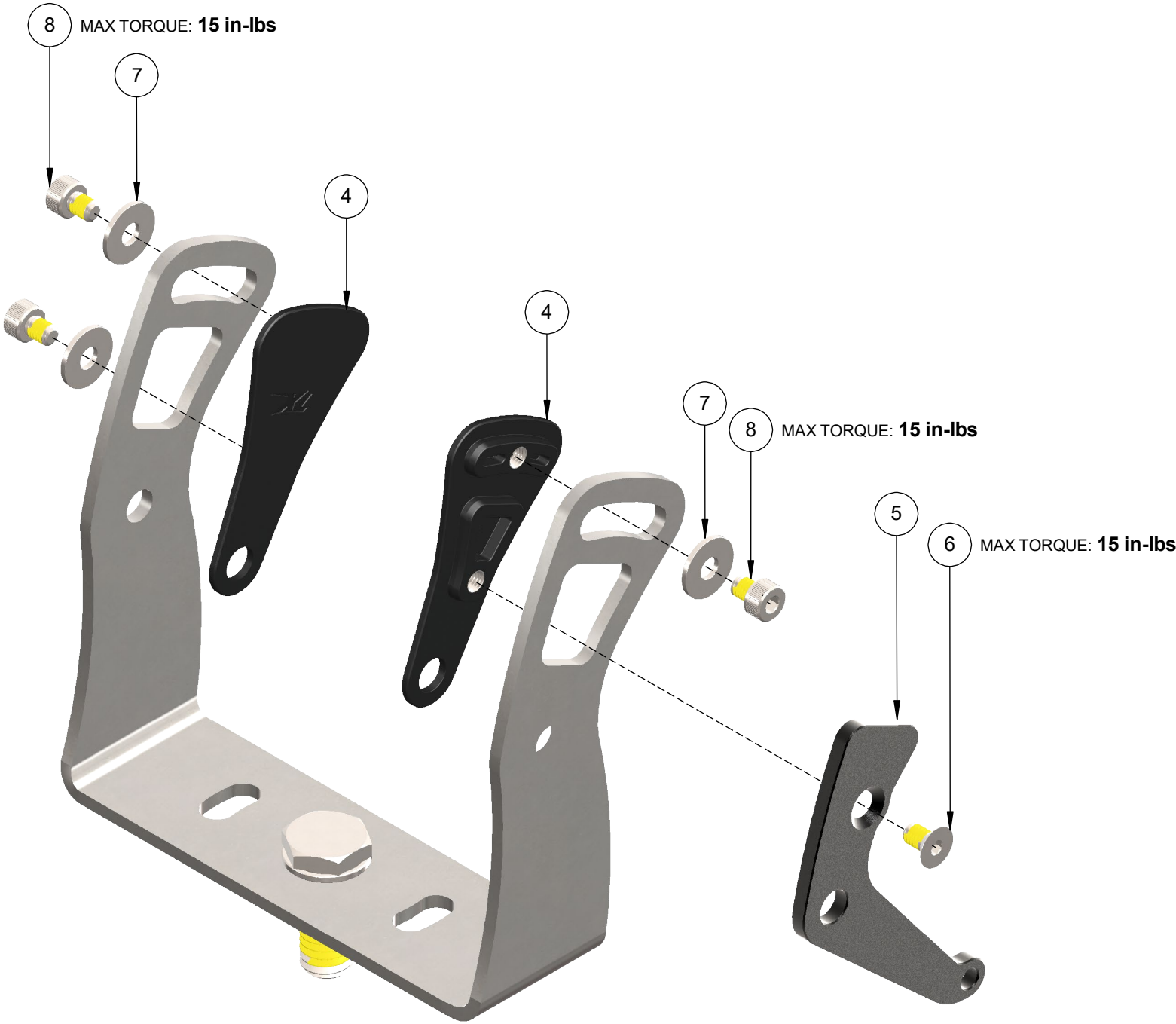


**Step 1**  
Install bolt into bracket

- ITEMS: (1) (2) (3)



	ITEM NO.	DESCRIPTION	QTY.
STEP 2	4	Thrust Insert, XLS(P)	2
	5	Mount Plate, XLS(P)	1
	6	M4 X 7mm Flat Head Cap Screw	1
	7	M4 Oversized Washer	3
	8	M4 X 5mm Socket Head Cap Screw	3



**Step 2**  
Install thrust inserts + mount plate to bracket

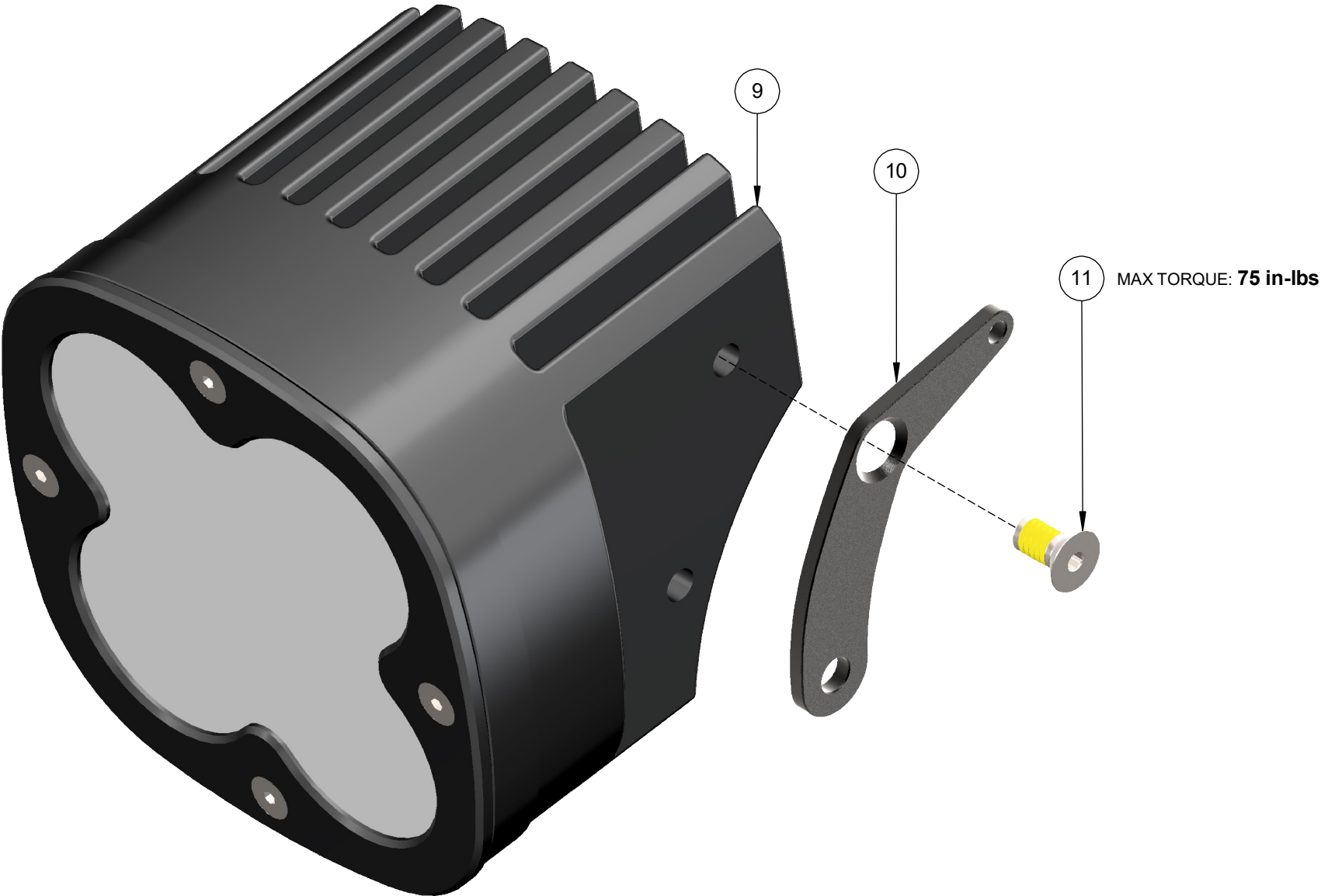
ITEMS: 4 5 6 7 8

TOOLS NEEDED: • 2.5mm HEX WRENCH • 3mm HEX WRENCH



For left side actuator installation.  
Install opposite side for right side actuator installation

	ITEM NO.	DESCRIPTION	QTY.
STEP 3	9	XL Standard (Pro) Housing	2
	10	Pivot Plate, XLS(P)	1
	11	1/4"-20 X 1/2" Flat Head Cap Screw, Undercut	1



**Step 3**  
Install pivot plate to housing

ITEMS: 9 10 11

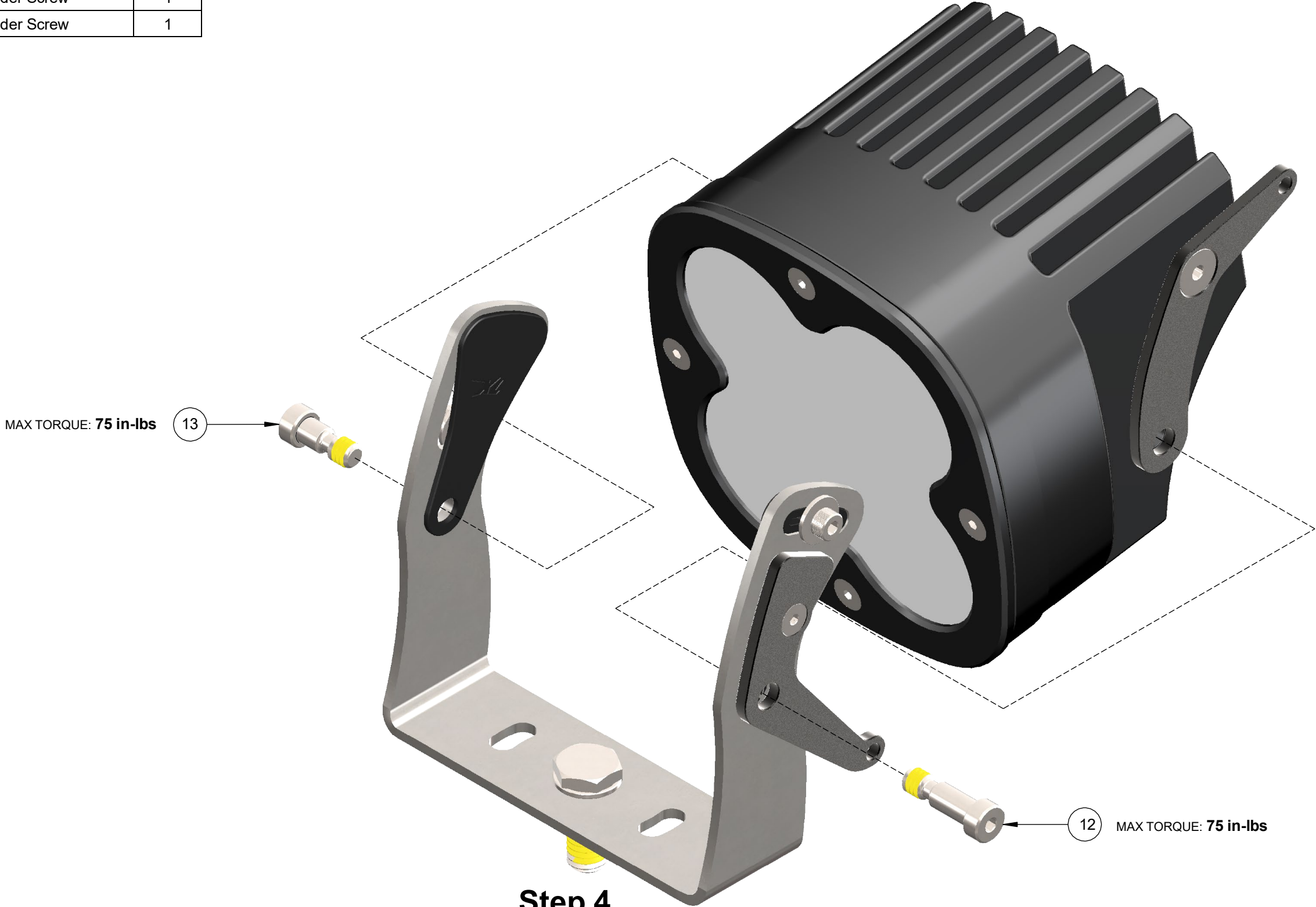
TOOLS NEEDED: • 3mm HEX WRENCH



For left side actuator installation.  
Install opposite side for right side actuator installation



	ITEM NO.	DESCRIPTION	QTY.
STEP 4	12	Ø1/4" X .480" Shoulder Screw	1
	13	Ø1/4" X .240" Shoulder Screw	1



**Step 4**  
Install shoulder screws through bracket to housing

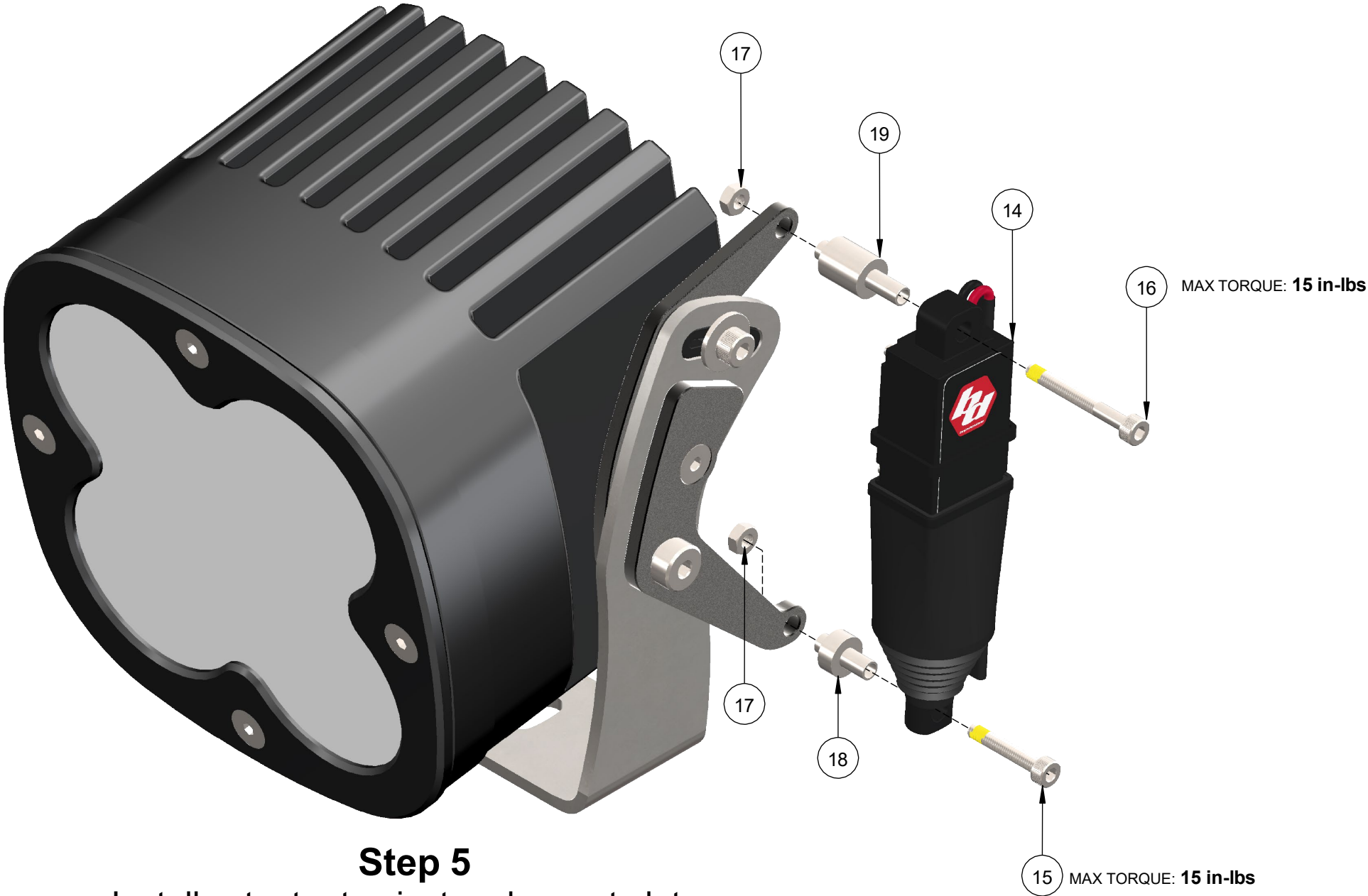
ITEMS: 12 13

TOOLS NEEDED: • 3mm HEX WRENCH



For left side actuator installation.  
Install opposite side for right side actuator installation

	ITEM NO.	DESCRIPTION	QTY.
STEP 5	14	12V Actuator	1
	15	M3 X 18mm Socket Head Cap Screw	1
	16	M3 X 26mm Socket Head Cap Screw	1
	17	M3 Nut	2
	18	M3 Screw Spacer, Shoulder Type 1, 3mm L	1
	19	M3 Screw Spacer, Shoulder Type 2, 10mm L	1

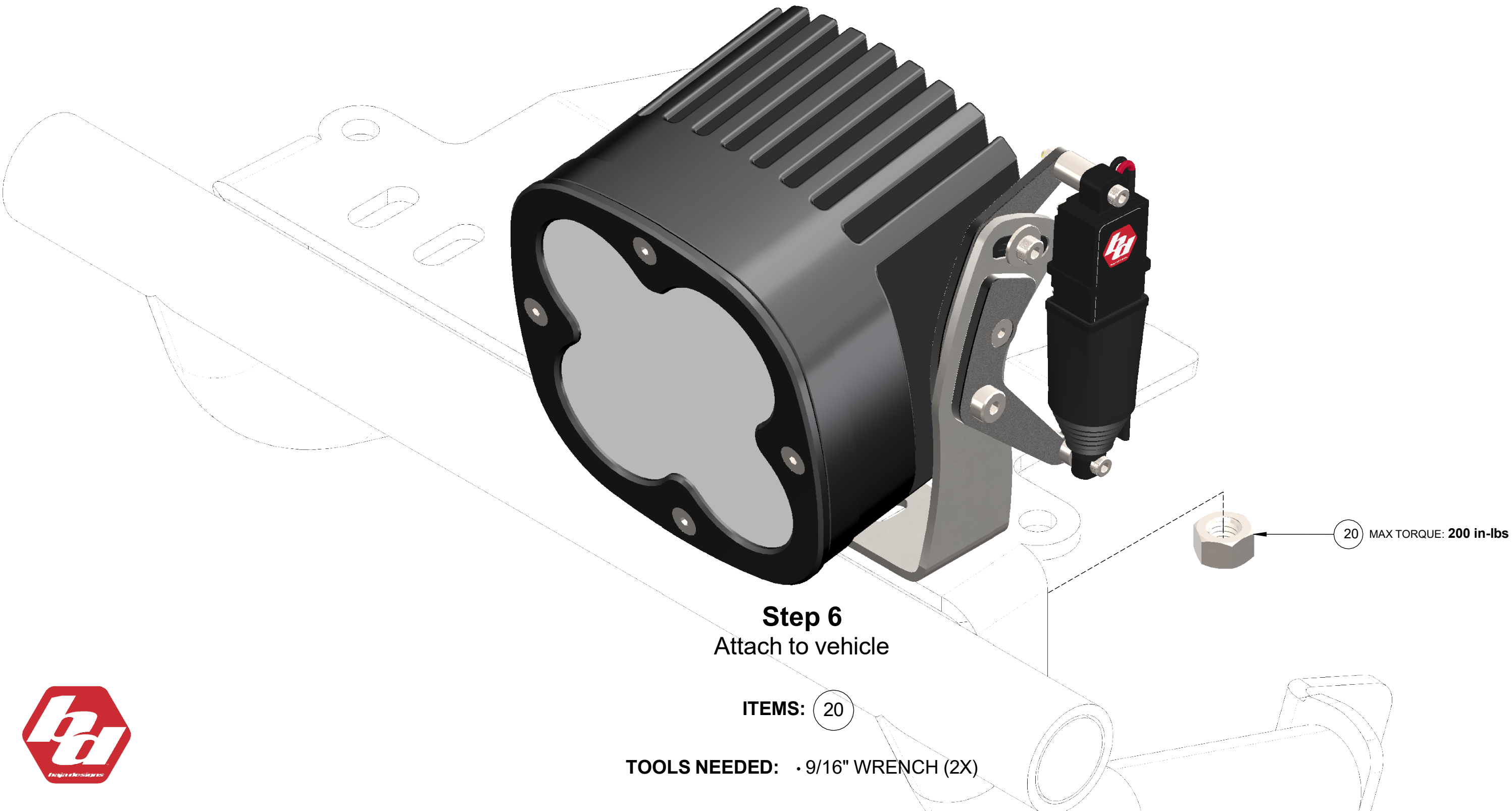


ITEMS: 14 15 16 17 18 19

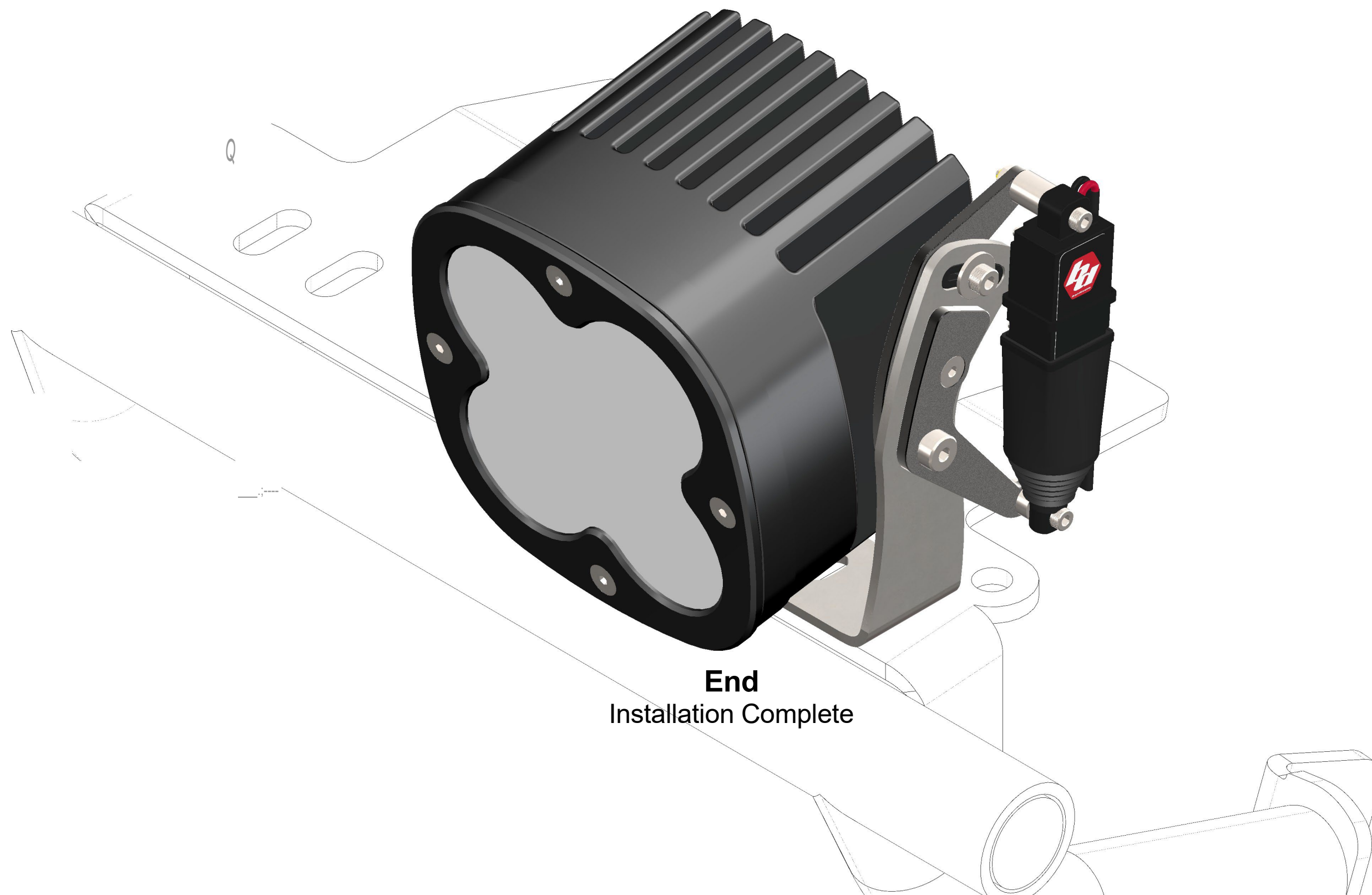
TOOLS NEEDED: • 2.5mm HEX WRENCH • 5.5mm WRENCH

For left side actuator installation.  
Install opposite side for right side actuator installation

	ITEM NO.	DESCRIPTION	QTY.
STEP 6	20	3/8"-16 Nut	1







**End**  
Installation Complete

