



baja designs®
THE SCIENTISTS OF LIGHTING

Rocker Switch Actuator Harness (64-6306, 64-6307)



2950 Norman Strasse San Marcos, CA 92069

Phone 760-560-2252 X3 • Fax 760-560-0383

info@bajadesigns.com • www.bajadesigns.com



baja designs[®]
THE SCIENTISTS OF LIGHTING

LIMITED LIFETIME WARRANTY

Baja Designs proudly offers a LIFETIME WARRANTY against manufacturer's defect on all the products that we manufacture.

These are comprehensive warranties; other than the exclusions below – you're covered. If your LED or HID bulb burns out, you're covered. Additionally, cutting off our connector or changing your lenses does not automatically void your warranty.

Exclusions:

Installation errors, abuse, misuse, or crash damage. You must be the original owner of the product and can supply proof of purchase.

Baja Designs manufactures its own products as well as resells products manufactured by others. Baja Designs makes no express or implied warranties on products not manufactured by Baja Designs including without limitation any warranties or merchantability and fitness for a purpose. We will, however, pass on all warranties made by the manufacturer, who has sole responsibility for performing such warranties.

Baja Designs will pay the freight if your product is less than 90 days old, otherwise defective products must be returned to Baja Designs, Inc., freight prepaid. At our option, we will repair or replace items in question and return them at no charge. If the identical product is no longer available, we will replace it with a similar product of equal value. Baja Designs Inc. will not be responsible for any indirect or consequential damages in connection with defective merchandise.

Items purchased through a Baja Designs authorized dealer must be returned through the dealer. Only available on LED auxiliary lights and product must be in sellable condition at MSRP. Product that has been damaged in any way after the original purchase date will be excluded from this guarantee.

Indemnification:

Buyer hereby acknowledges off-roading, racing and driving at night are dangerous activities and that the products and/or supplies purchased from Baja Designs are used in an inherently dangerous activity that may endanger life and limb; and in no event shall the seller, or seller's heirs and assigns, be held liable for consequential damages, nor shall seller's liability on any claim for damages arising out of or connected with the sale, delivery, or use of purchased products and/or supplies exceed the purchase price of the products and/or supplies.

Buyer is responsible for ensuring that it uses the products (and its vehicle) in accordance with all applicable laws, regulations, guidelines, and standards of care. Buyer acknowledges that some products may only be used when off-roading, and Buyer will comply with all vehicle and road safety guidelines. Buyer is solely responsible for (and will indemnify and hold Bestop harmless for) any claims, losses, damages, fines, fees, costs, or other amounts arising out of Buyer's non-compliance with these provisions.

***For a color copy of instructions, visit your vehicle specific application on BajaDesigns.com ***

To begin, make sure the vehicle is in park, on level ground and the parking brake is engaged.

Step 1:

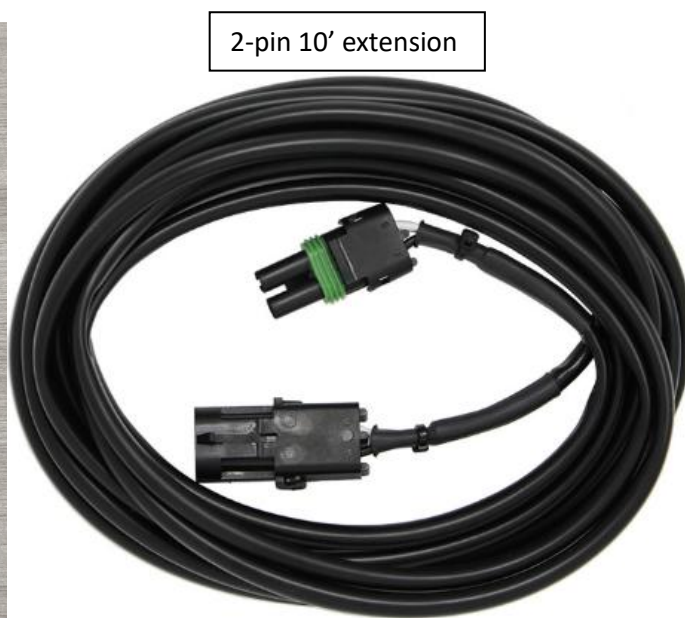
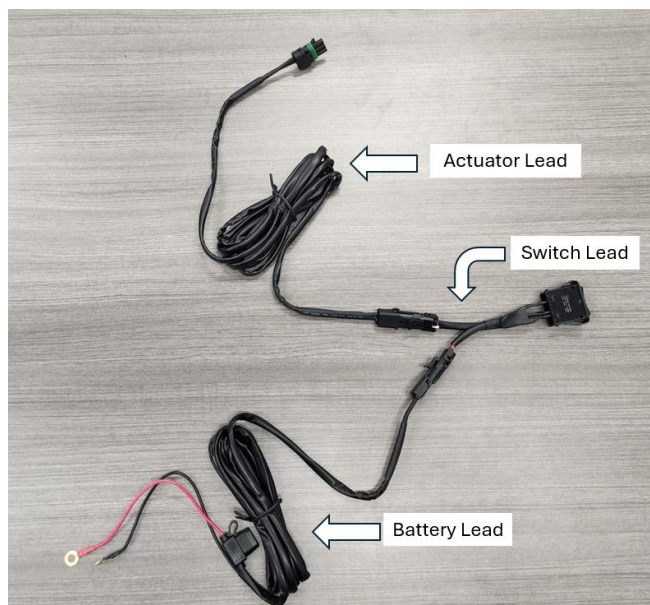
Disconnect the negative battery cable. Be careful as some vehicles may have multiple batteries.

Step 2:

Identify a suitable location to mount a switch. Ensure there are no wires or critical components behind the desired location. Create a hole 22mmx44mm (7/8" x 1-3/4"). [A template can be found at the end of the instructions]. Remove the battery lead and actuator leads from the switch portion of the harness. Do not press the switch into position yet.

Step 3:

If installing into a **truck or car**, route the battery lead from the engine bay into the cab and connect it to the switch lead with the red and black wires. Route the ring terminals to the battery but do not connect them yet. If in a **UTV** application, connect the battery lead to the switch lead with the red and black wires and route the cable and ring terminals towards the battery source. Do not connect to the battery yet. If the cables are not long enough, a 10' extension cable (BD PN: 64-0165) can be placed in line to extend its reach.



Step 4:

If installing on a **truck or car**, route the actuator lead from the engine bay into the cab and connect it to the switch lead with the white and black wires. Route the lead(s) towards the actuators. If in a **UTV** application, connect the actuator lead to the switch lead with the white and black wires and route the actuator leads towards the actuators. Actuator leads can be extended if they are not long enough.

Single lead extension: 64-0169 3-Pin, 5' Extension – Universal **(For use with 64-6304)**

55" Splitter 3-Pin: 61-3609 3-Pin, 55" Splitter – Universal **(For use with 64-6304)**

Single lead extension: 64-0165 2-Pin, 10' Extension- Universal **(For use with 64-6305)**

55" Splitter 2-Pin: 61-3606 2-Pin, 55" Splitter – Universal **(For use with 64-6305)**

Step 5: (3+ actuators only)

If connecting more than 2 actuators, an XL Linkable harness will be connected to the actuator harness. If connecting 5 actuated lights, use the 5 XL Linkable harness. If connecting 8 use the 8XL Linkable harness and so on. Starting on the actuator furthest from the actuator harness, link all of the actuators together using the linkable harness. Once complete, connect the linkable harness to the actuator harness. It is recommended that the lights be spaced roughly 6" apart for optimal connector spacing.

Light Count	Part Number
3	64-0193
4	64-0194
5	64-0195
6	64-0190
7	64-0191
8	64-0192

Step 6: (1 to 2 actuators only)

Connect the actuator(s) to the actuator harness. If only using a single actuator, (10" S8 or OnX6+) take the unused lead and bundle it away as it will not be used.

Step 7:

Connect the positive (red) ring terminal to the positive battery cable. Connect the negative ring terminal to the negative battery cable and reconnect all battery cables.

Step 8:

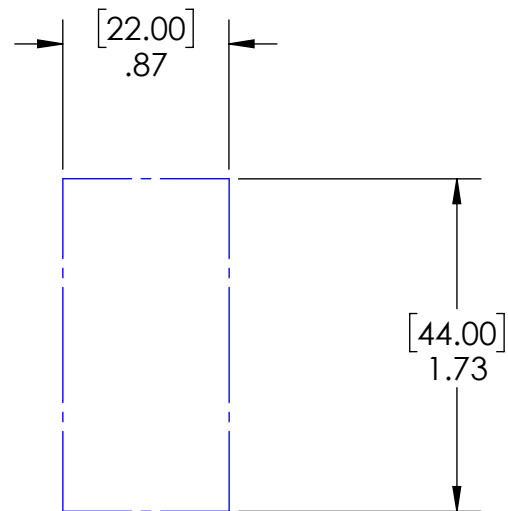
Test the actuators and determine which way is up on the switch. Press the switch into the new switch hole with the up direction facing up. Secure all wiring and place extra lengths of wire into service loops.

*Tie all wires away from sharp, hot, and/or rotating components.

* Re-torque all the fasteners after 100 miles.

*Your install is now complete! Thank you for choosing Baja Designs.

Switch cutout template



Note: measure the template to ensure the printer's scaling is correct.