



baja designs[®]
THE SCIENTISTS OF LIGHTING

**(2019-On) Dodge, Ram Rebel/TRX Dual S2
Fog Pocket Kit Instructions
44-8024**



185 Bosstick Boulevard • San Marcos • CA • 92069

Phone 760-560-2252 • Fax 760-560-0383 X3

info@bajadesigns.com • www.bajadesigns.com



baja designs[®]
THE SCIENTISTS OF LIGHTING

LIMITED LIFETIME WARRANTY

Baja Designs proudly offers a LIFETIME WARRANTY against manufacturer's defect on all the products that we manufacture.

These are comprehensive warranties; other than the exclusions below – you're covered. If your LED or HID bulb burns out, you're covered. Additionally, cutting off our connector or changing your lenses does not automatically void your warranty.

Exclusions:

Installation errors, abuse, misuse or crash damage. You must be the original owner of the product and can supply proof of purchase.

Baja Designs manufactures its own products as well as resells products manufactured by others. Baja Designs makes no express or implied warranties on products not manufactured by Baja Designs including without limitation any warranties or merchantability and fitness for a purpose. We will, however, pass on all warranties made by the manufacturer, who has sole responsibility for performing such warranties.

Baja Designs will pay the freight if your product is less than 90 days old, otherwise defective products must be returned to Baja Designs, Inc., freight prepaid. At our option, we will repair or replace items in question and return them at no charge. If the identical product is no longer available, we will replace with a similar product of equal value. Baja Designs Inc. will not be responsible for any indirect or consequential damages in connection with defective merchandise.

Items purchased through a Baja Designs authorized dealer must be returned through the dealer. Only available on LED auxiliary lights and product must be in sellable condition at MSRP. Product that has been damaged in any way after the original purchase date will be excluded from this guarantee.

Indemnification:

Buyer hereby acknowledges off-roading, racing and driving at night are dangerous activities and that the products and/or supplies purchased from Baja Designs are used in an inherently dangerous activity that may endanger life and limb; and in no event shall the seller, or seller's heirs and assigns, be held liable for consequential damages, nor shall seller's liability on any claim for damages arising out of or connected with the sale, delivery, or use of purchased products and/or supplies exceed the purchase price of the products and/or supplies

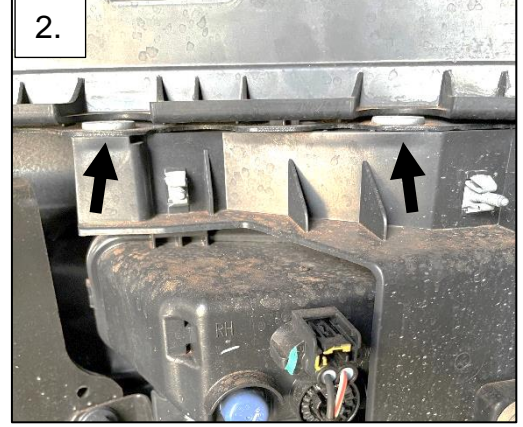
Tools Required

- 7mm, 8mm, 10mm, T-40 socket
- 10mm wrench
- Multi-meter

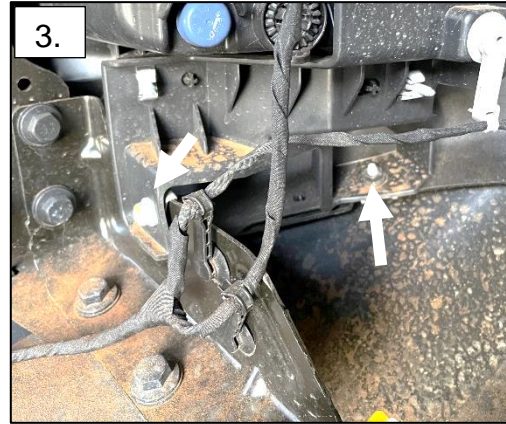
1. Using a 8mm socket, remove the (5x) bolts in the front fender wells securing the inner liner. Do the same on the opposite side.



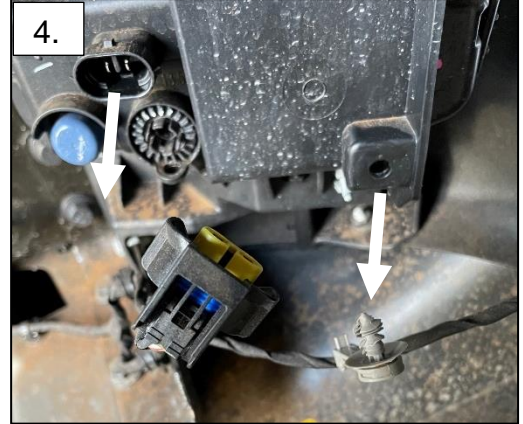
2. Using a T-40, remove the (2x) bolts mounting the top of the fog light.



3. Using a 10mm socket and wrench, remove the bolt on the left and nut on the right securing the lower portion of the fog light.



4. Un-plug the factory fog light harness from the back of the light. Pull on the grey harness clip that is mounted on the back of the light.



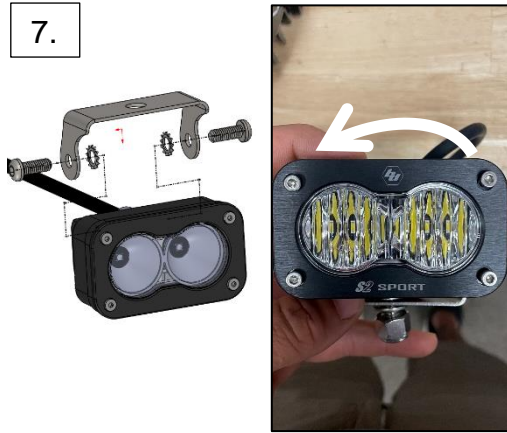
5. Gently apply force on the top of the fog light bracket to release the locating tab. Once the tab is free from the steel bumper, remove the light by pulling back.



6. Using a 7mm socket, remove the (4x) bolts securing the OEM fog light.



7. Assemble the standard bracket onto the light like the exploded view. If the bezel is as shown on the light, using a 2.5mm Allen wrench, remove the (4x) allen bolts and rotate the Bezel 180.



8. Using the supplied 1/4-20 hardware, mount the lights to both the driver side and passenger side brackets. (Note: The passenger side bracket is used for this photo)



9. For initial fitment, center the light in the bracket leaving the same gap top to bottom. Rotate the light so the face is parallel to the mounting tab. For the outward light, do the same or face outward depending on preference.



10. Mount the steel bracket to the plastic fog light bracket. Only tighten 2 bolts and check alignment.




11. While checking alignment, rotate the lights to achieve the desired lighting. Use the slots in the steel bracket to shift the lights left to right to eliminate any unwanted gaps. Once the positioning is correct, tighten all hardware.



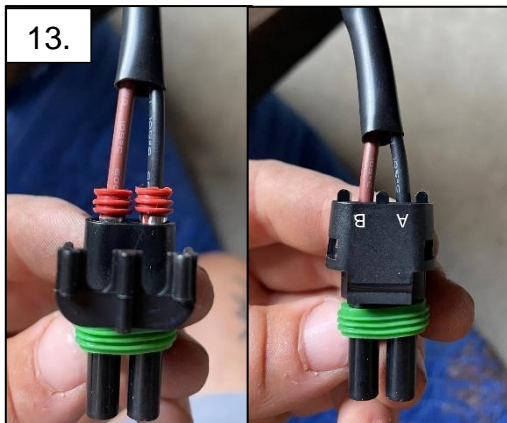
12. Using a multi-meter, probe the OEM fog light plug to determine the wire distributing the 12V power.

Set multi-meter to DC Volts. Symbol shown below:

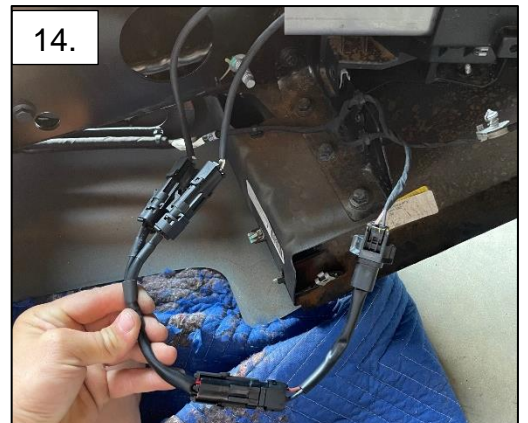


Probe each wire, one will read 12+ Volts when the key, fog light and head light switch is on.

13. Plug the supplied harness adapter into the OEM fog light harness. Pin the plug so the power wire is in the B port and ground wire is in the A port. Snap the connector closed.



14. Plug in the supplied splitter harness to the adapter harness. Plug in the fog lights into the splitter harness.



Tie all wires away from sharp, hot, and/or rotating components.

Re-torque all the fasteners after 100 miles.

Your install is now complete! Thank you for choosing Baja Designs.