



baja designs®
The Scientists of Lighting

44-7849, 44-7855 GMC, 2500 & 3500 (20-23), FPK Kit Instructions



2950 Norman Strasse Rd • San Marcos • CA • 92069

Phone 760-560-2252 • Fax 760-560-0383

info@bajadesigns.com • www.bajadesigns.com



baja designs®
The Scientists of Lighting

LIMITED LIFETIME WARRANTY

Baja Designs proudly offers a LIFETIME WARRANTY against manufacturer's defect on all the products that we manufacture. These are comprehensive warranties; other than the exclusions below – you're covered. If your LED or HID bulb burns out, you're covered. Additionally, cutting off our connector or changing your lenses does not automatically void your warranty.

Exclusions:

Installation errors, abuse, misuse or crash damage. You must be the original owner of the product and can supply proof of purchase.

Baja Designs manufactures its own products as well as resells products manufactured by others. Baja Designs makes no express or implied warranties on products not manufactured by Baja Designs including without limitation any warranties or merchantability and fitness for a purpose. We will, however, pass on all warranties made by the manufacturer, who has sole responsibility for performing such warranties.

Baja Designs will pay the freight if your product is less than 90 days old, otherwise defective products must be returned to Baja Designs, Inc., freight prepaid. At our option, we will repair or replace items in question and return them at no charge. If the identical product is no longer available, we will replace with a similar product of equal value. Baja Designs Inc. will not be responsible for any indirect or consequential damages in connection with defective merchandise.

Items purchased through a Baja Designs authorized dealer must be returned through the dealer. Only available on LED auxiliary lights and product must be in sellable condition at MSRP. Product that has been damaged in any way after the original purchase date will be excluded from this guarantee.

Indemnification:

Buyer hereby acknowledges off-roading, racing and driving at night are dangerous activities and that the products and/or supplies purchased from Baja Designs are used in an inherently dangerous activity that may endanger life and limb; and in no event shall the seller, or seller's heirs and assigns, be held liable for consequential damages, nor shall seller's liability on any claim for damages arising out of or connected with the sale, delivery, or use of purchased products and/or supplies exceed the purchase price of the products and/or supplies. Buyer is responsible for ensuring that it uses the products (and its vehicle) in accordance with all applicable laws, regulations, guidelines, and standards of care. Buyer acknowledges that some products may only be used when off-roading, and Buyer will comply with all vehicle and road safety guidelines. Buyer is solely

****For a color copy of instructions, visit your vehicle specific application on BajaDesigns.com ****

Tools Required

- * Trim Removal Tool Or Flat Head Screw Driver
- * Zip Tie Cutters
- * T-15 Torx Bit
- * 7mm, 10mm, 7/16", 13mm, 15mm, 18mm socket

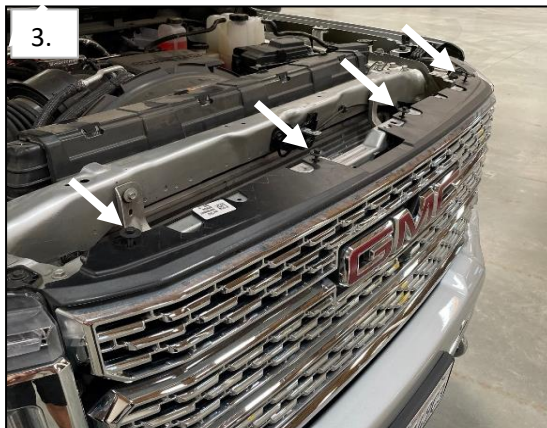
1. Using a T-15 Torx Bit, remove the 2x fasteners securing the hood latch handle.



2. Using a trim removal tool or flat head screw driver, remove the 10x push pins securing the top radiator shroud.



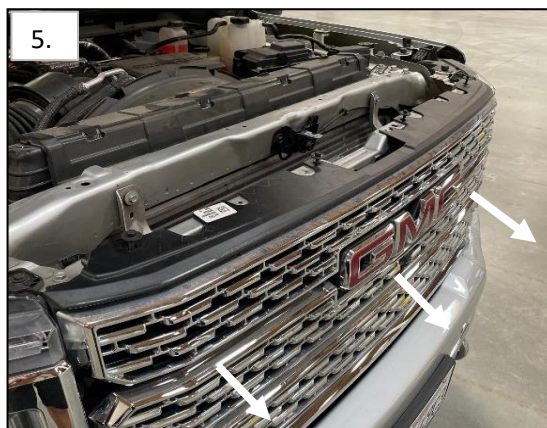
3. Using a 10mm socket, remove the 4x fasteners securing the top of the grille.



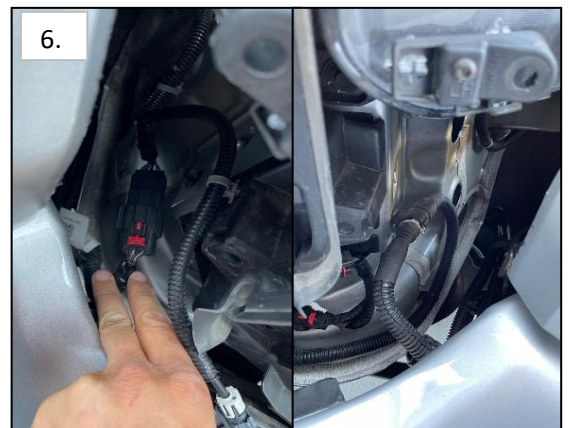
4. Gently pull on the bumper cover's to release the self locking tabs. Look behind the cover to see a second locking tab on the side. Using needle nose pliers, collapse the locking tab to release the bumper cover further. This will help with re-installing the grille.



5. Gently pull on the grill in the areas shown to release the self locking tabs. Before removing the grill completely, un-plug the front facing camera (if equipped).



6. Un-plug the front bumper's main connector located on the passenger side. Next un-plug the block heater connector (if equipped) located on the driver side.



7. Using a 18mm socket, remove the 4x bolts securing the front bumper.

8. Located on the bottom side of the bumper, using a 15mm socket, remove the 2x bolts securing the bumper support brackets.



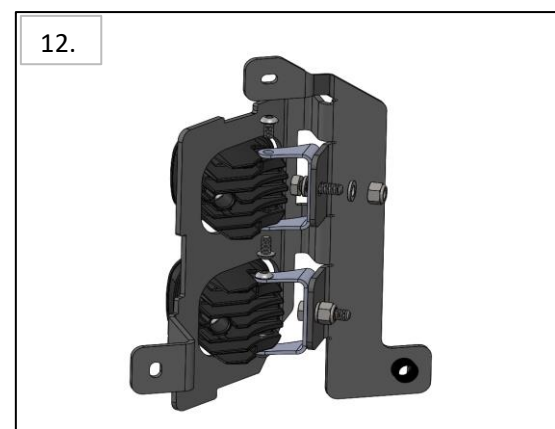
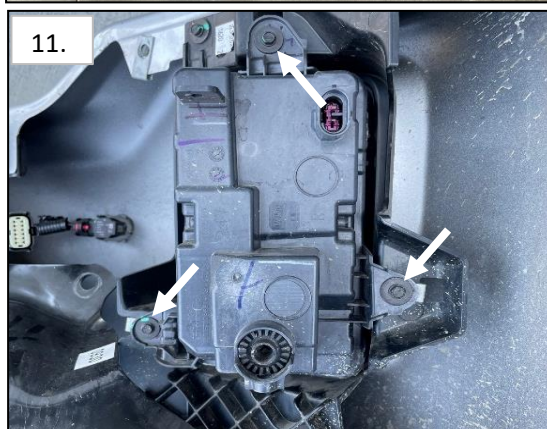
9. Using a 13mm & 7mm socket, remove the 8x bolts securing the inner bumper brace.

10. Unplug the OEM light connector. On the driver side, unhook the reusable wire clasps securing the block heater wire.



11. Set the inner bumper brace to the side, using a 7mm socket, remove the 3x bolts securing the fog light.

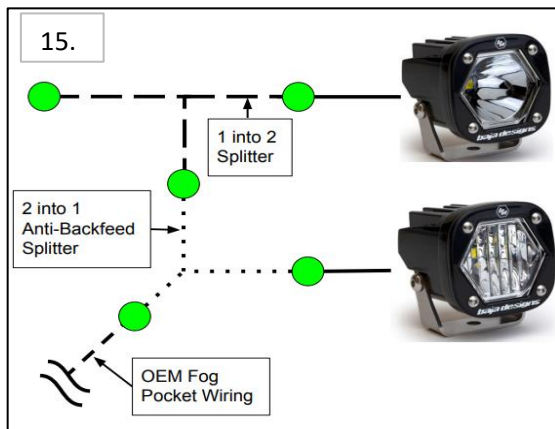
12. Install the S1 lights onto the brackets as shown.



13. Lay the bracket down onto the bumper. Install the supplied spacer in-between the bracket and bumper for the mount shown. Fasten down with the OEM hardware.

14. Repeat steps 9-13 for the opposite side.

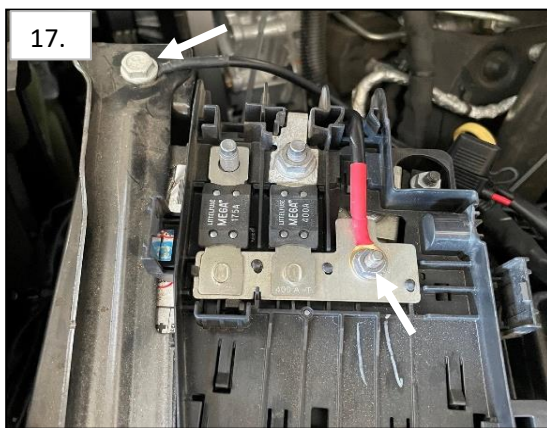
15. Using the supplied wire splitters and adapters, plug in the lights as shown in the configuration.



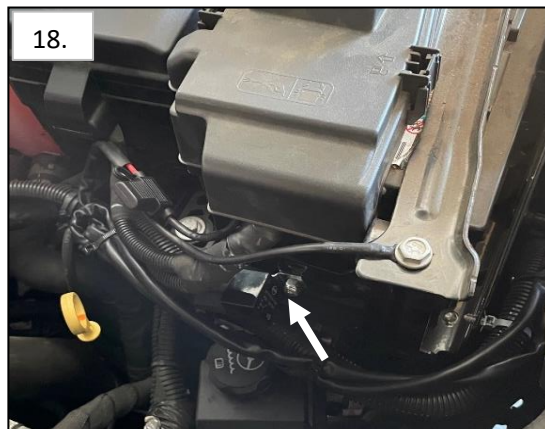
16. Once wired, re-install the inner bumper support braces and re-install the bumper. Route the supplied harness from the battery down behind the headlights to the connectors for the fog lights.



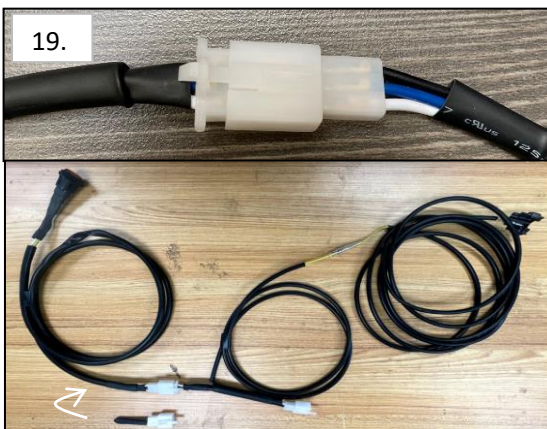
17. Using a 10mm & 13mm socket, mount the power ring terminal to the battery as shown. Mount the ground to the battery cradle.



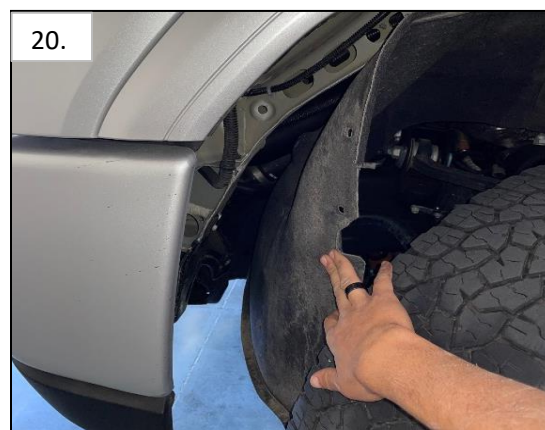
18. Located on the side of the battery cradle is a flange with a 1/4" hole. Using a 7/16" wrench and socket, use the supplied hardware to mount the relay.



19. Remove the toggle switch from the main harness and the trigger harness. Replace the toggle switch on the trigger harness with the supplied jumper plug. Plug the trigger harness into the main harness.



20. Using a T-15, remove the 6x torx bolts securing the fender liner on the driver side.



21. Remove the lower plug connected to the headlight.



22. Route the clasp connector lead on the trigger harness to the back of the passenger or driver side head light. Place the clasp connector over the white wire. This wire is pinned to the top left location (red locking tab facing up)



23. Once completed, reassemble the grille & fender liner then test the lights. The OEM Fog switch will control the bottom fog light and the high beams will trigger all fog lights to turn on.



Tie all wires away from sharp, hot, and/or rotating components.
Re-torque all the fasteners after 100 miles.
Your install is now complete! Thank you for choosing Baja Designs.