



baja designs[®]
THE SCIENTISTS OF LIGHTING

**Jeep Wrangler JK DOT LP6 Headlight Kit
(44-8310, 44-8311)**



2950 Norman Strasse San Marcos, CA 92069 Phone 760-560-2252 X3 • Fax 760-560-0383 info@bajadesigns.com •
www.bajadesigns.com

LIMITED LIFETIME WARRANTY

Baja Designs proudly offers a LIFETIME WARRANTY against manufacturer's defect on all the products that we manufacture.

These are comprehensive warranties; other than the exclusions below – you're covered. If your LED or HID bulb burns out, you're covered. Additionally, cutting off our connector or changing your lenses does not automatically void your warranty.

Exclusions: Installation errors, abuse, misuse, or crash damage. You must be the original owner of the product and can supply proof of purchase.

Baja Designs manufactures its own products as well as resells products manufactured by others. Baja Designs makes no express or implied warranties on products not manufactured by Baja Designs including without limitation any warranties or merchantability and fitness for a purpose. We will, however, pass on all warranties made by the manufacturer, who has sole responsibility for performing such warranties. Baja Designs will pay the freight if your product is less than 90 days old, otherwise defective products must be returned to Baja Designs, Inc., freight prepaid. At our option, we will repair or replace items in question and return them at no charge. If the identical product is no longer available, we will replace it with a similar product of equal value. Baja Designs Inc. will not be responsible for any indirect or consequential damages in connection with defective merchandise. Items purchased through a Baja Designs authorized dealer must be returned through the dealer. Only available on LED auxiliary lights and product must be in sellable condition at MSRP. Product that has been damaged in any way after the original purchase date will be excluded from this guarantee.

Indemnification: Buyer hereby acknowledges off-roading, racing and driving at night are dangerous activities and that the products and/or supplies purchased from Baja Designs are used in an inherently dangerous activity that may endanger life and limb; and in no event shall the seller, or seller's heirs and assigns, be held liable for consequential damages, nor shall seller's liability on any claim for damages arising out of or connected with the sale, delivery, or use of purchased products and/or supplies exceed the purchase price of the products and/or supplies. Buyer is responsible for ensuring that it uses the products (and its vehicle) in accordance with all applicable laws, regulations, guidelines, and standards of care. Buyer acknowledges that some products may only be used when off-roading, and

Buyer will comply with all vehicle and road safety guidelines. Buyer is solely responsible for (and will indemnify and hold Bestop harmless for) any claims, losses, damages, fines, fees, costs, or other amounts arising out of Buyer's non-compliance with these provisions.

Required Tool(s)

- Trim Removal Tool or Flathead Screwdriver
- Allen Key Set
- Socket set



(44-9403) (Qty: 1)
LP6 headlight Bracket DS



(44-9404) (Qty: 1)
LP6 Headlight Bracket PS



(64-0176) (Qty: 1)
LP Series Backlit Add-on
Wiring Harness Universal



**(60-0077)
(Qty: 2)**
Jeep JK DOT
LP6 Adapter
Harness



(18-7801) (Qty: 1)
DOT LP6, Pair LED, Clear
DRL



(20-1285) (Qty: 4)
M6, 60mm Steel Hex
Head Screw



(20-1293) (Qty: 6)
Compression Spring 1.75"
Long



**(20-1296)
(Qty: 2)**
Hardware,
M5 x 0.8
mm Thread,
60mm long

To begin, make sure the vehicle is in park, on level ground and the parking brake is engaged.

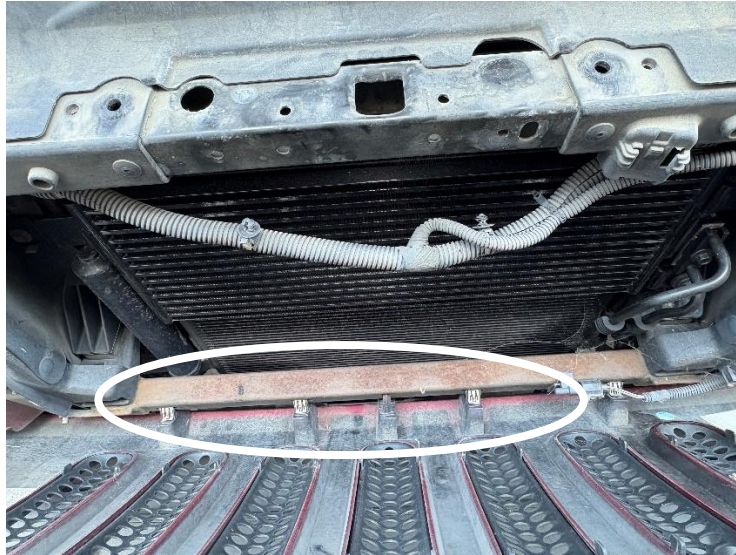
Step 1: Open hood of Jeep & Remove Grill

Open the hood of the Jeep

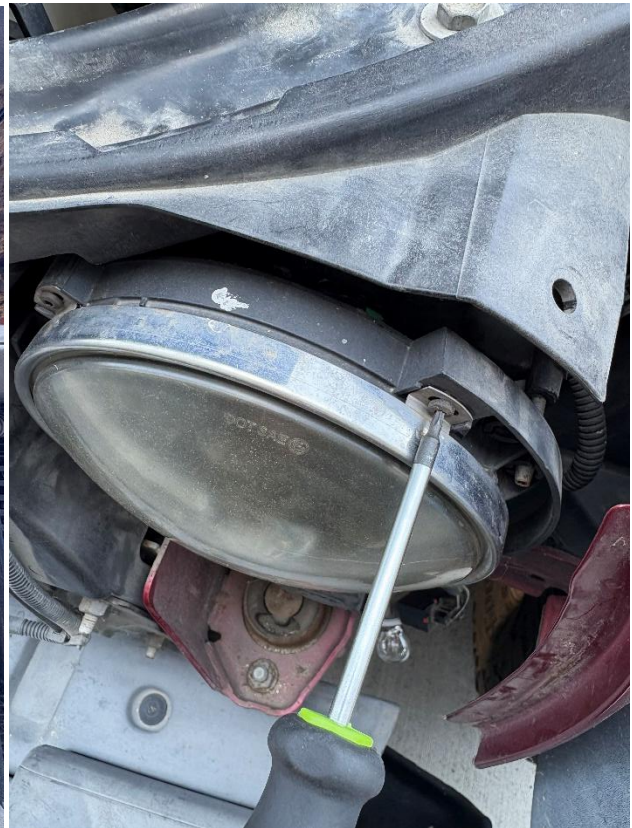
Remove the 6 grill clips using a flathead screwdriver or trim removal tool



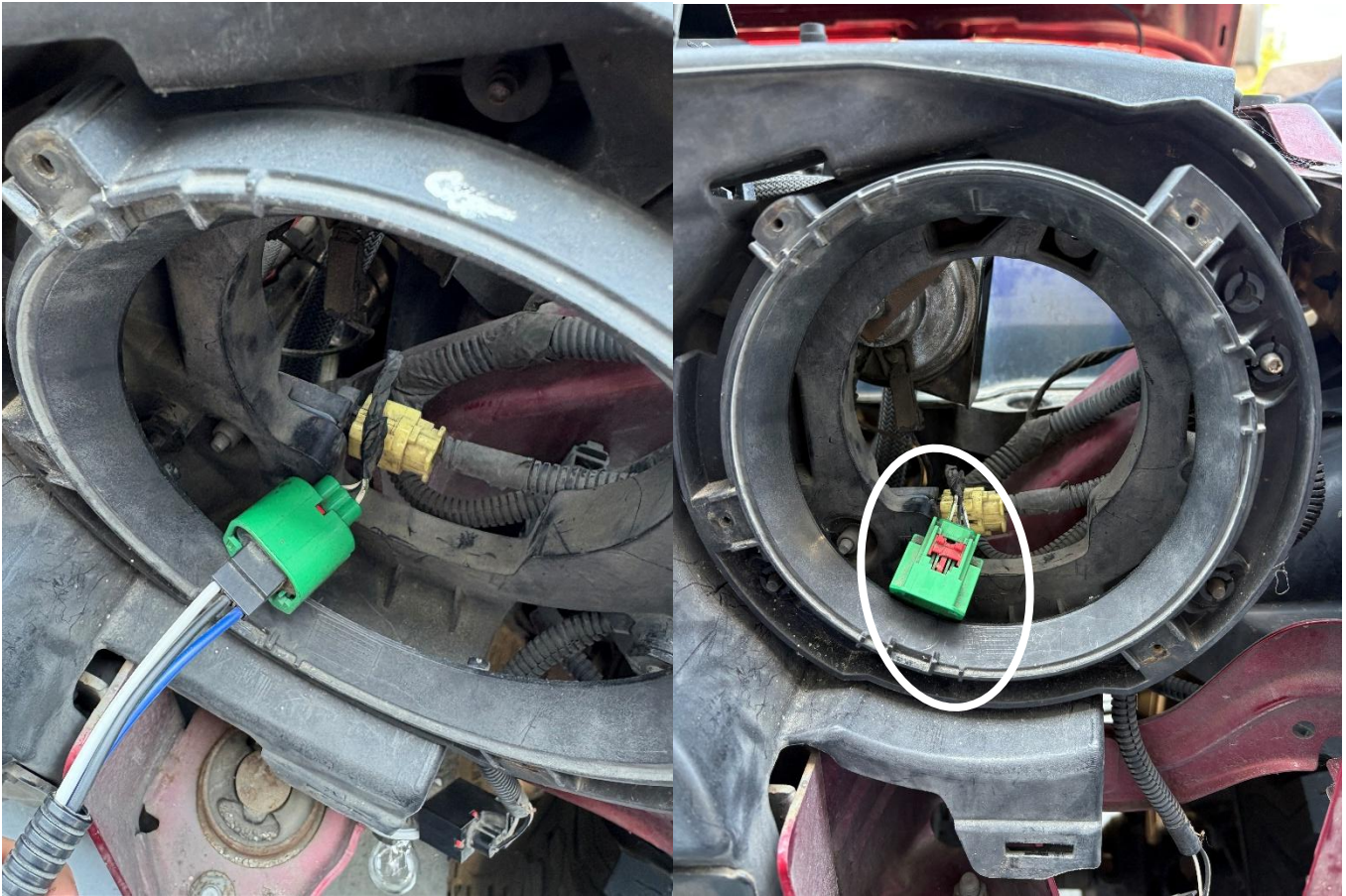
Remove Grill by pulling horizontally from Jeep, make sure clips shown below are unclipped



Remove Factory Headlight by removing the 4 torx head bolts holding the headlight into place



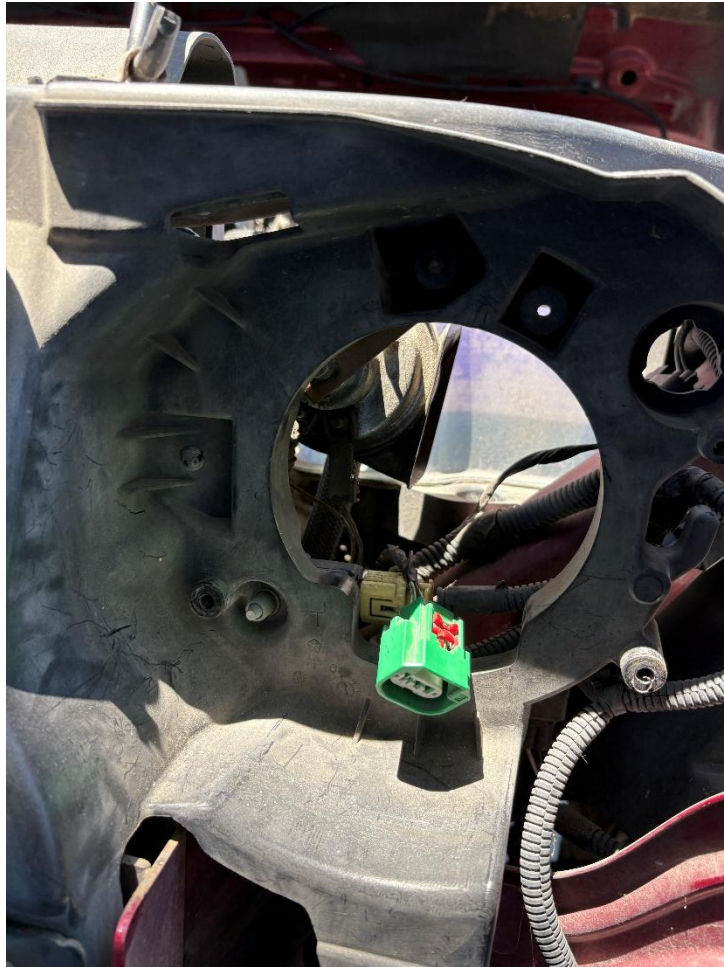
Unplug any aftermarket headlight adapter harness to just be left with the connector circled



Remove the factory headlight mount using a 15mm wrench for bottom two screws (shown below) and a torx bit screwdriver for the top adjuster



After removal, your jeep should look like the picture below



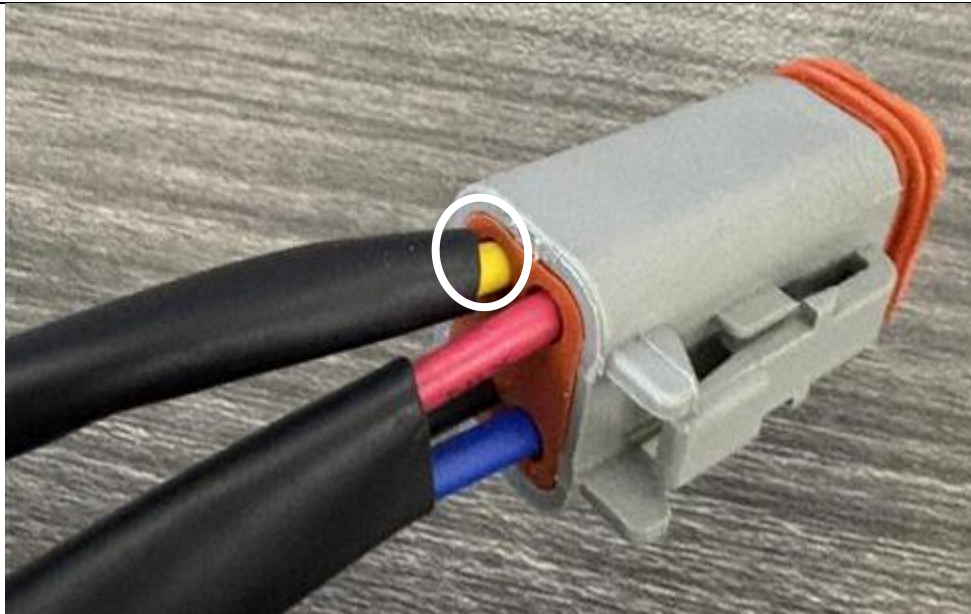
DOT LP6 DRL Add in

Since the Jeep JK does not come with DRLs or wiring for them, using the **LP series backlit add-on wiring harness** that came in the Jeep JK DOT LP6 kit is required if you would like to have DRL functionality.

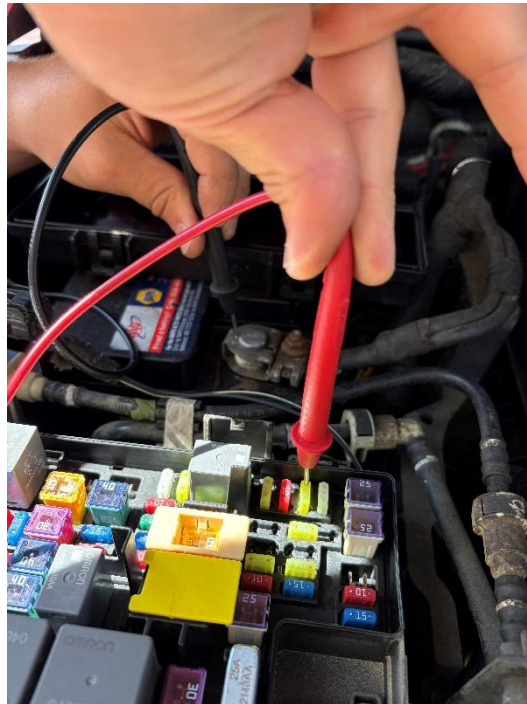
IF DRL FUNCTION IS NOT DESIRED SKIP TO PAGE 10

Assemble the wiring harness:

Using the LP series backlit add on, place the yellow wire into the 4 pin connector empty spot (PIN 3) on adapter harness as shown



Repeat for second adapter harness

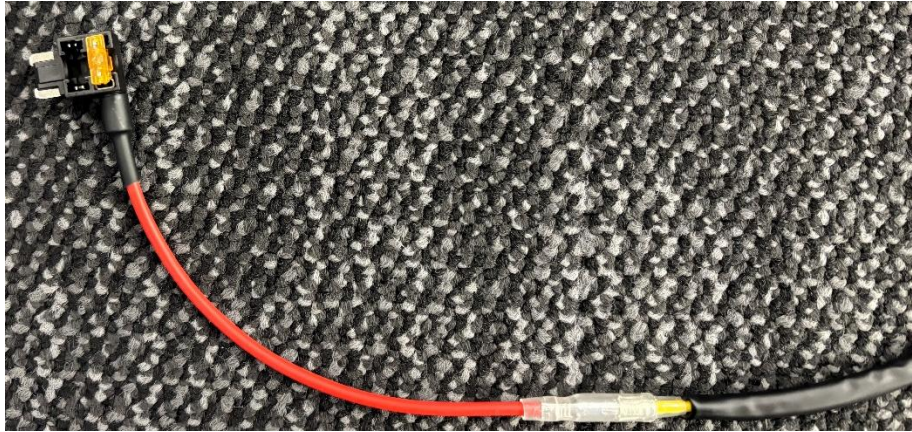


For DRL add on, use the fuse shown in the picture above as the fuse tap location so DRL is on when Jeep Ignition is on.

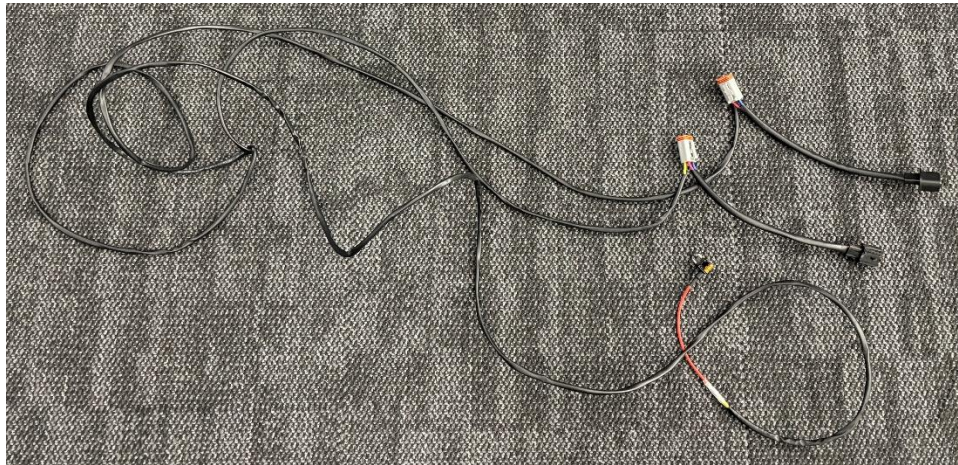
Your Jeep may have another acceptable fuse tap location. You can find it by measuring if there is any current through a fuse when ignition is on, and then none when ignition is off. If the fuse meets these requirements, then you may use that fuse as a fuse tap location.

Once the acceptable fuse is identified, choose the appropriate size fuse tap provided in the LP Series Backlit add on kit

Connect the bullet connectors to the right size fuse tap as shown



Congrats! You have an assembled harness with DRL functionality!



Install the fuse tap portion and route the two adapter harnesses to the headlight locations.

Step 2: Bracket Assembly

Assemble DOT LP6 in the bracket as shown below



Use the supplied hardware and washers to mount the DOT LP6 to the bracket using a 7/16" socket

Repeat this Step for Drivers / Passenger Side

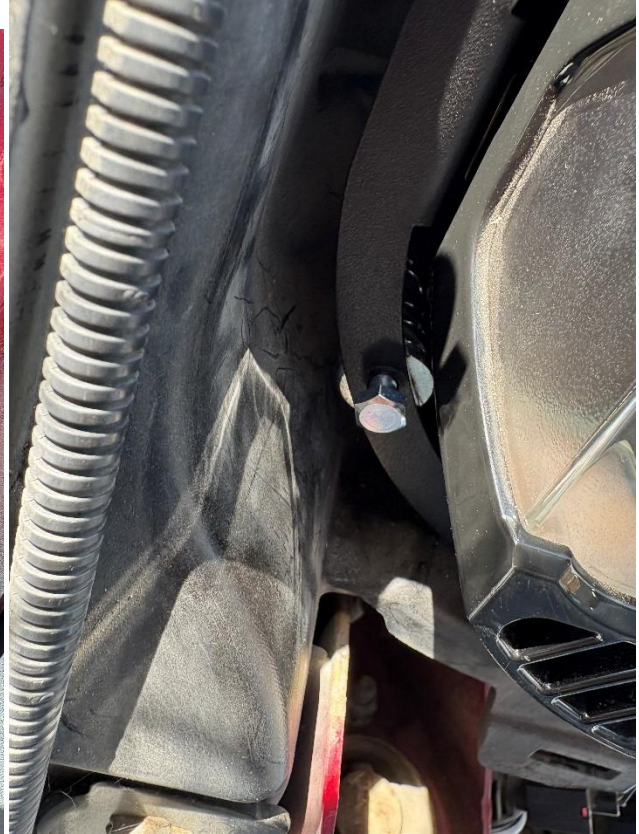
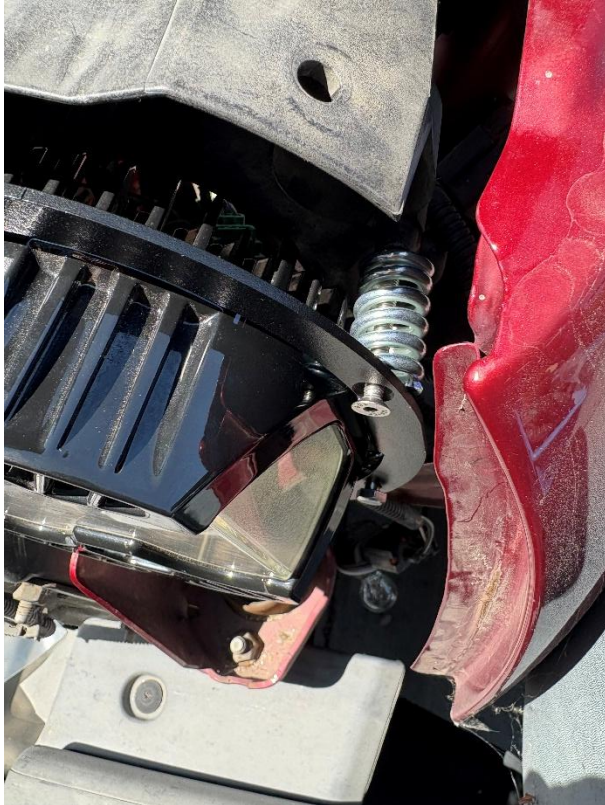
Step 3: Installing DOT LP6 Headlights

Place the assembled DOT LP6 & Bracket in the headlight pocket.

On the bracket there is a countersunk hole, this is meant for the flat head 60mm long M5 screw as shown below.

The other two holes (not countersunk) on the bottom of the bracket are for the Hex Head M6 Screws.

Make sure to place a compression spring between each screw and the Jeep for full adjustability.





Tighten each hardware piece until snug, then 4 turns past snug.

Before reinstalling the grill, make sure to adjust and aim your headlights. The 3 screws on the headlight bracket are all adjustment screws.

Top Screw: Adjust headlight angle upwards or downwards

Two bottom screws: Adjust headlight angle side to side & downwards

Reinstall Grill once headlight is aimed appropriately and reinstall factory clips



Complete Installation

Tie all wires away from sharp, hot, and/or rotating components.

Re-torque all the fasteners after 100 miles.

Your install is now complete! Thank you for choosing Baja Designs.