



baja designs[®]
THE SCIENTISTS OF LIGHTING

**2018+ Jeep Wrangler JL & Gladiator JT DOT LP6 Headlight Kit
(44-8303, 44-8309)**



2950 Norman Strasse San Marcos, CA 92069 Phone 760-560-2252 X3 • Fax 760-560-0383 info@bajadesigns.com •
www.bajadesigns.com

LIMITED LIFETIME WARRANTY

Baja Designs proudly offers a LIFETIME WARRANTY against manufacturer's defect on all the products that we manufacture.

These are comprehensive warranties; other than the exclusions below – you're covered. If your LED or HID bulb burns out, you're covered. Additionally, cutting off our connector or changing your lenses does not automatically void your warranty.

Exclusions: Installation errors, abuse, misuse, or crash damage. You must be the original owner of the product and can supply proof of purchase.

Baja Designs manufactures its own products as well as resells products manufactured by others. Baja Designs makes no express or implied warranties on products not manufactured by Baja Designs including without limitation any warranties or merchantability and fitness for a purpose. We will, however, pass on all warranties made by the manufacturer, who has sole responsibility for performing such warranties. Baja Designs will pay the freight if your product is less than 90 days old, otherwise defective products must be returned to Baja Designs, Inc., freight prepaid. At our option, we will repair or replace items in question and return them at no charge. If the identical product is no longer available, we will replace it with a similar product of equal value. Baja Designs Inc. will not be responsible for any indirect or consequential damages in connection with defective merchandise. Items purchased through a Baja Designs authorized dealer must be returned through the dealer. Only available on LED auxiliary lights and product must be in sellable condition at MSRP. Product that has been damaged in any way after the original purchase date will be excluded from this guarantee.

Indemnification: Buyer hereby acknowledges off-roading, racing and driving at night are dangerous activities and that the products and/or supplies purchased from Baja Designs are used in an inherently dangerous activity that may endanger life and limb; and in no event shall the seller, or seller's heirs and assigns, be held liable for consequential damages, nor shall seller's liability on any claim for damages arising out of or connected with the sale, delivery, or use of purchased products and/or supplies exceed the purchase price of the products and/or supplies. Buyer is responsible for ensuring that it uses the products (and its vehicle) in accordance with all applicable laws, regulations, guidelines, and standards of care. Buyer acknowledges that some products may only be used when off-roading, and

Buyer will comply with all vehicle and road safety guidelines. Buyer is solely responsible for (and will indemnify and hold Bestop harmless for) any claims, losses, damages, fines, fees, costs, or other amounts arising out of Buyer's non-compliance with these provisions.

Required Tool(s)

- 10mm Socket
- 7/16" Socket
- Trim Removal Tool or Flathead Screwdriver
- 4mm Allen Key



(44-9474) (Qty: 1)
LP6 headlight Front
Bracket DS



(44-9475) (Qty: 1)
LP6 Headlight Back
Bracket DS



(44-9476) (Qty: 1)
LP6 headlight Front
Bracket PS



(44-9477) (Qty: 1)
LP6 Headlight Back
Bracket PS



(18-7801) (Qty: 1)
DOT LP6, Pair LED, Clear
DRL



(20-0083) (Qty: 6)
Compression Spring



(20-0084) (Qty: 6)
M6-1.0 35mm Length
Button Head Hex Drive
Screw



(Qty: 8)
1/4" Hex Bolt 5/8" length



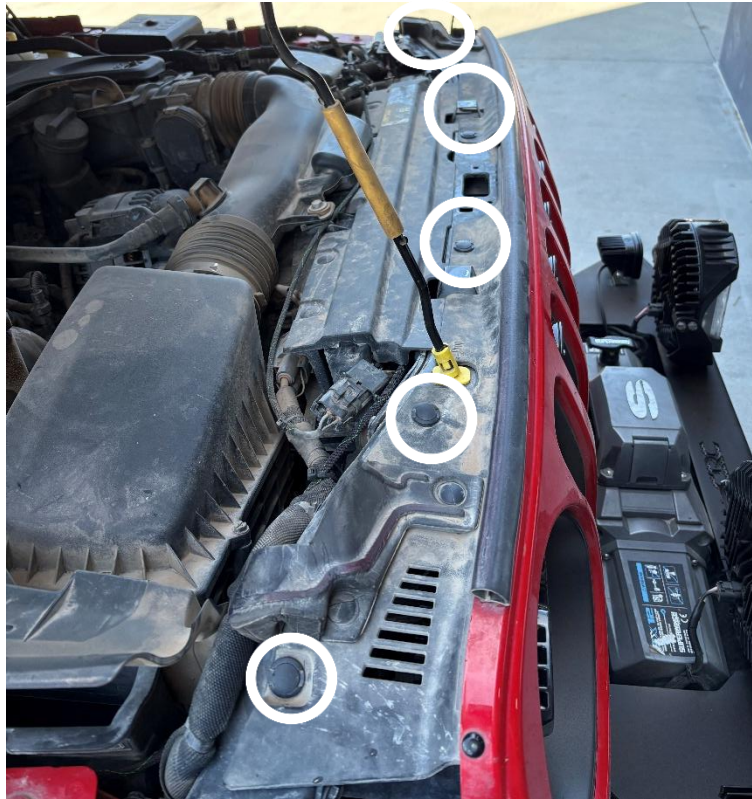
Adapter Harness (Qty:2)

To begin, make sure the vehicle is in park, on level ground and the parking brake is engaged.

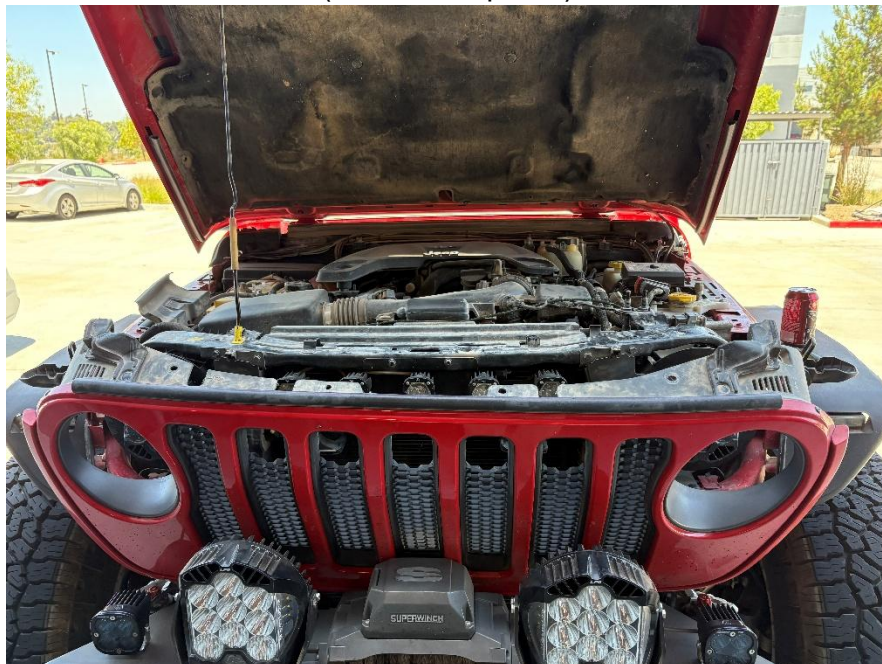
Step 1: Open hood of Jeep & Remove Grill

Open the hood of the Jeep

Remove the 6 grill clips using a flathead screwdriver or trim removal tool

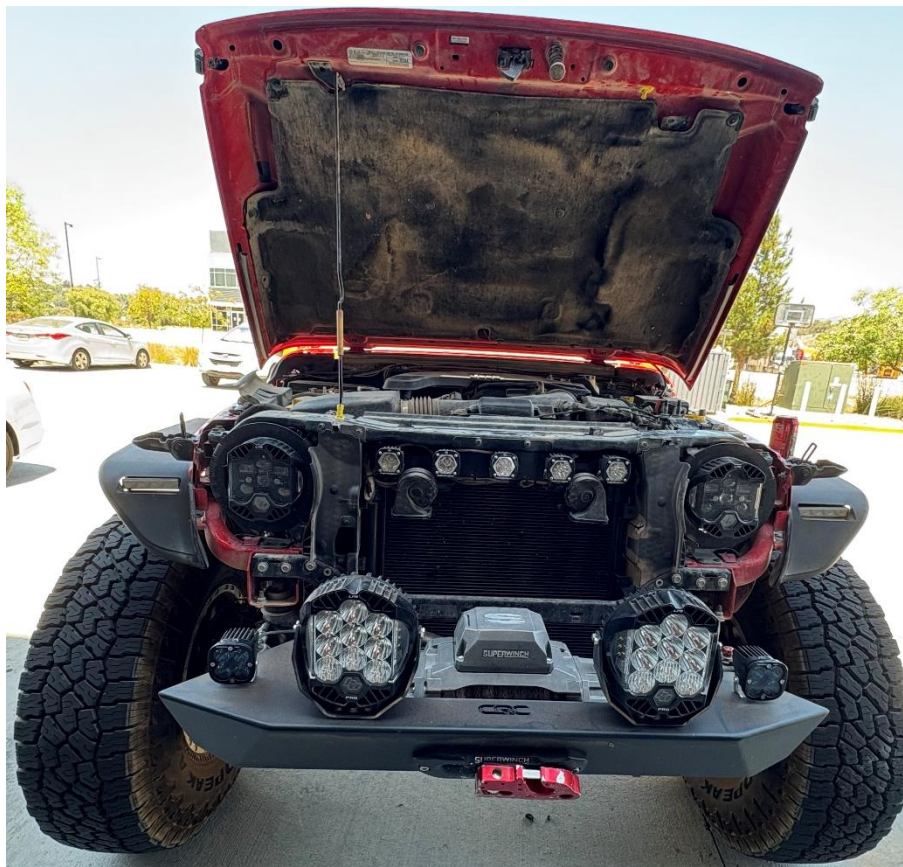


Grill should fall forward, then GENTLY pull directly away from front of Jeep to pull lower grill clips out (no tools required)





Remove grill from Jeep



Step 2: Bracket Assembly

Each Side will use:

1 Front Bracket

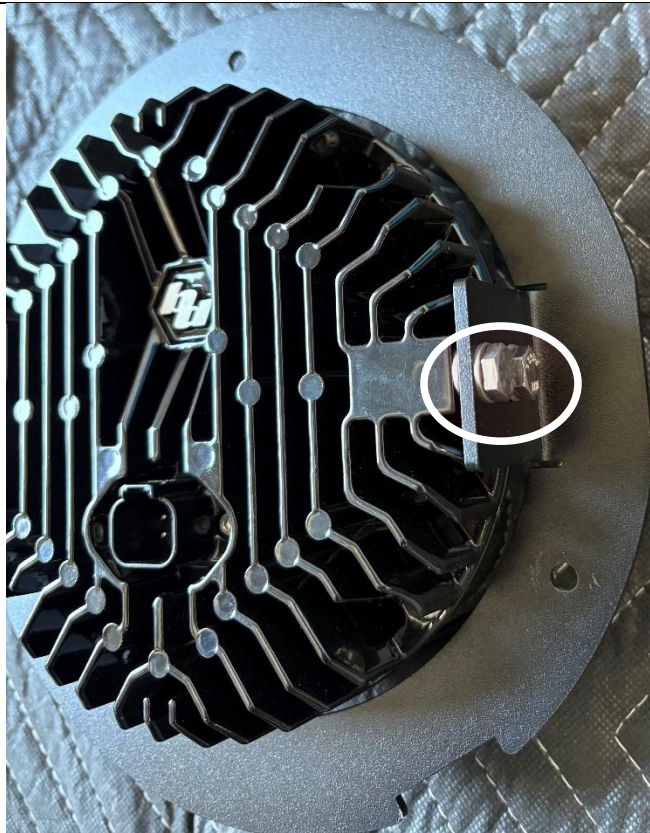
1 Rear Bracket

3 Compression springs

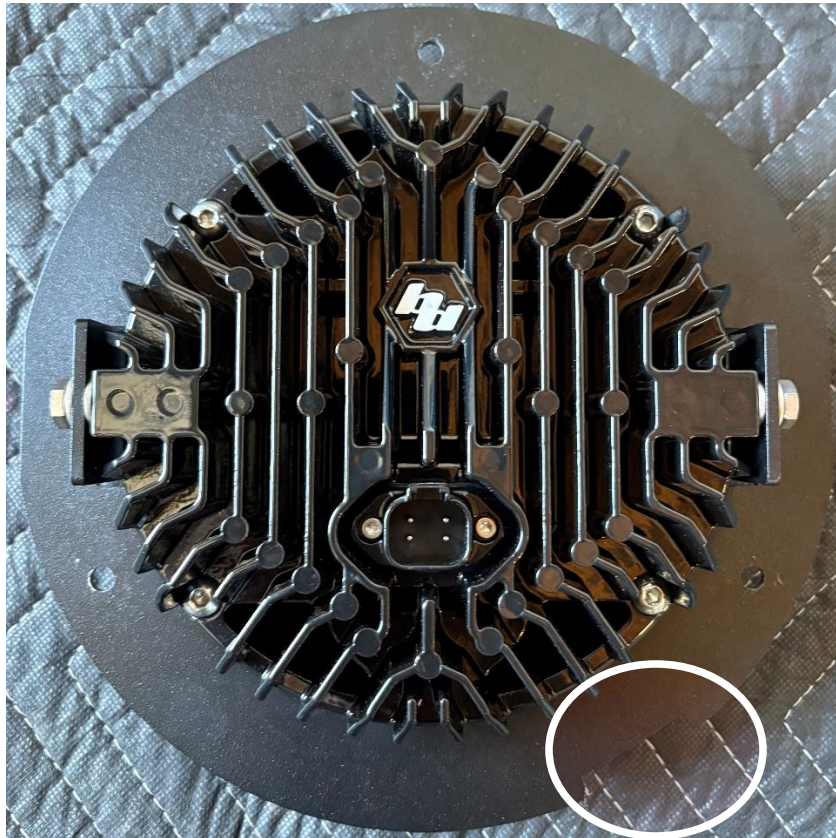
3 M6-1.0 35mm long bolts



Attach DOT LP6 to front bracket with 7/16" socket and ratchet using the four 1/4" hex head bolts provided with the DOT LP6 lights



DOT LP6 should be installed in the front bracket in the orientation shown below (Notch Down)



Place compression springs over the PEM nuts as shown below



Place Headlight with the front bracket installed on top of the compression springs
Use the M6-1.0 35mm long hardware to attach the front bracket to the rear bracket using 4mm Allen key



Repeat this step for the drivers side bracket assembly

Step 3: Installing DOT LP6 Headlights

Remove the 3 bolts that are currently holding on the current Jeep Headlight using 10mm socket and unplug the headlight from the Jeep



Plug in the Baja Designs adapter harness to the existing factory wiring harness

Place the assembled DOT LP6 bracket kit in place utilizing the existing locating tabs



With a 10mm socket, use the 3 screws that were removed that held in the stock headlight to install the Baja Designs DOT LP6 assembly.

Repeat for drivers side of the vehicle

Before reinstalling the grill, make sure to adjust and aim your headlights. The 3 screws on the headlight bracket are all adjustment screws.

Top Screw: Adjust headlight angle upwards or downwards

Two bottom screws: Adjust headlight angle side to side & downwards

Reinstall Grill once headlight is aimed appropriately and reinstall factory clips

Tie all wires away from sharp, hot, and/or rotating components.

Re-torque all the fasteners after 100 miles.

Your install is now complete! Thank you for choosing Baja Designs.