



***baja designs.***  
The Scientists of Lighting

## **XL Sport, Yamaha YZ250FX/450FX (19-20) w/Headlight Shell**



**PN: 50-7103**

### **Installation Manual**

**2950 Norman Strasse Rd • San Marcos • CA • 92069**

**Phone 760.560.2252 • Fax 760.560.0383 • [info@bajadesigns.com](mailto:info@bajadesigns.com)**

**[www.bajadesigns.com](http://www.bajadesigns.com)**



## LIMITED LIFETIME WARRANTY

**Baja Designs, Inc.** This warranty includes coverage of HID Bulbs and Ballasts. If you discover a defect in a product covered by this warranty, we will repair at our option using new or refurbished components, or if repair is not possible, replace the item.

### **EXCLUSIONS**

This warranty covers defects in manufacturing discovered while using the product as recommended by the manufacturer. The warranty does not cover loss or theft, nor does coverage extend to damage caused by rocks, crashes/collisions, misuse, abuse, unauthorized modification, improper storage conditions, lightning, or natural disasters. The warranty does not cover parts that are subject to normal wear and tear replacement requirements.

### **LIMITS OF LIABILITY**

Should the product(s) fail, your sole recourse shall be repair or replacement, as described in the preceding paragraphs. We will not be held liable to you or any other party for any damages that result from the failure of this product. Damages excluded include, but are not limited to, the following: lost profits, lost savings, medical costs, damage to other equipment, and incidental or consequential damages arising from the use, or inability to use this product. In no event will Baja Designs, Inc. be liable for more than the amount of your purchase price, not to exceed the current list price of the product, and excluding tax, shipping and handling charges. Baja Designs, Inc. disclaims any other warranties, express or implied. By installing or using the product, the user accepts all terms described herein.

### **HOW TO OBTAIN SERVICE UNDER THIS WARRANTY**

Contact us using one of the following methods:

Phone: (760) 560-2252 or email: [info@bajadesigns.com](mailto:info@bajadesigns.com)

### **REQUIREMENTS**

Within 90 days of purchase return ground shipping costs will be paid for by Baja Designs, Inc. After 90 days from purchase, return shipping costs to be paid for by customer.

### **Indemnification:**

**Buyer hereby acknowledges off road driving/riding is a dangerous sport and that the products and/or supplies purchased from Baja Designs are used in an inherently dangerous activity that may endanger life and limb; and in no event shall the seller, or the seller's heirs and assigns, be held liable for consequential damages, nor shall seller's liability on any claim for damages arising out of or**

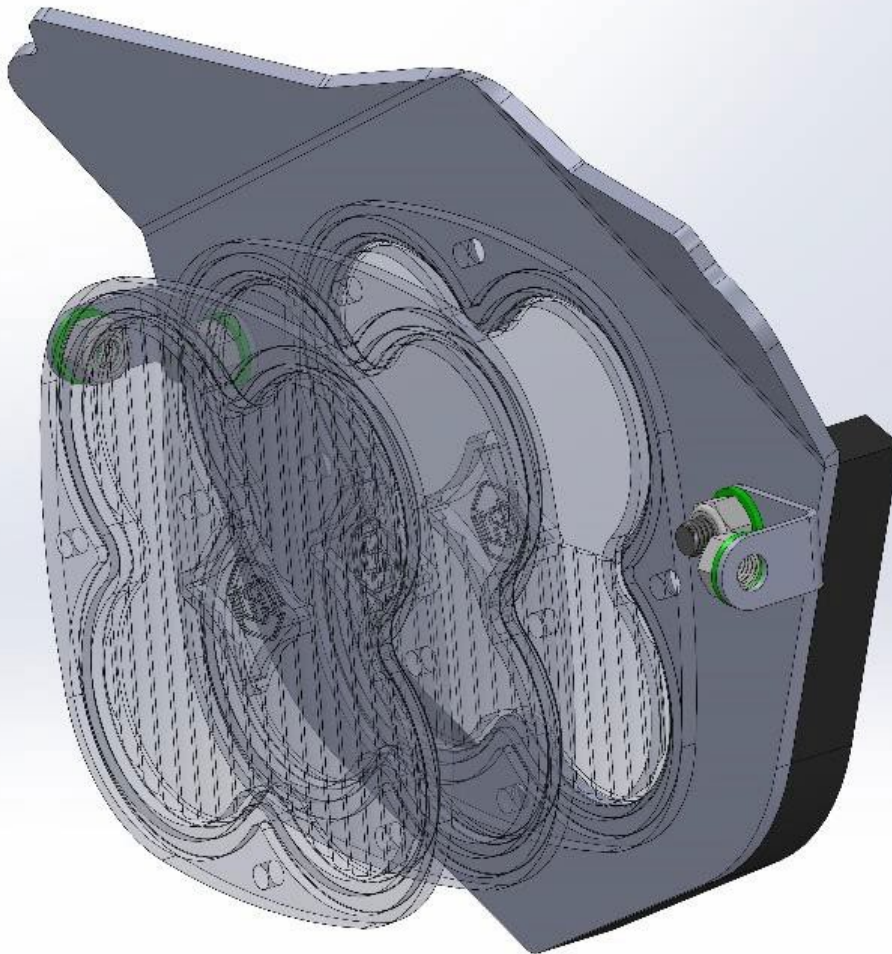


connected with the sale, delivery, or use of purchased products and/or supplies exceed the purchase price of the products and/or supplies.

Buyer is responsible for ensuring that it uses the products (and its vehicle) in accordance with all applicable laws, regulations, guidelines, and standards of care. Buyer acknowledges that some products may only be used when off-roading, and Buyer will comply with all vehicle and road safety guidelines. Buyer is solely responsible for (and will indemnify and hold Bestop harmless for) any claims, losses, damages, fines, fees, costs, or other amounts arising out of Buyer's non-compliance with these provisions.



**baja designs.**  
The Scientists of Lighting



**Please read this manual prior to installation.**

Thank you for purchasing the Baja Designs YZ450FX/YZ250FX kit. This kit has been designed to power a XL Sport LED light. Our wiring harness also has a bypass which allows you to turn on your high beams without the auxiliary lights coming on.

### **Kit Installation**

**Step 1:** Remove stock number plate assembly for the shell.

**Note:** You will be re-using your stock mounting bolts.



**baja designs.**  
The Scientists of Lighting

**Step 2:** Utilize the headlight stay provided in the kit unbolt your existing triple clamp bolts and bolt the headlight stay in place.

**Note:** The adjustment for up and down relies on friction therefore making sure the side bolts are tight enough to keep the light aimed where you want it is crucial.

**Step 3:** Route your wiring harness from the battery to the front of the bike. Connect the fuse terminal to the positive and the non-fuse terminal to the negative.



**Step 4.** Plug the Male H4 connector from the XL Sport into the H4 adapter on. Ensure the weather pack is connected to the entire harness.

**Note:** If you have chosen to use the “mode” function and have purchased the BD switch kit then plug the male and female bullet connectors in to the switch harness at this time also.