



**baja designs**<sup>®</sup>  
The Scientists of Lighting

**GMC, 1500 (19-On), Squadron/XL A-pillar kit  
Instructions 44-7742, 44-7743, 44-7876, 44-7877**



2950 Norman Strasse Rd. • San Marcos • CA • 92069

Phone 760-560-2252 x3 • Fax 760-560-0383

info@bajadesigns.com • [www.bajadesigns.com](http://www.bajadesigns.com)



**baja designs**<sup>®</sup>  
The Scientists of Lighting

## LIMITED LIFETIME WARRANTY

Baja Designs proudly offers a LIFETIME WARRANTY against manufacturer's defect on all the products that we manufacture.

These are comprehensive warranties; other than the exclusions below – you're covered. If your LED or HID bulb burns out, you're covered. Additionally, cutting off our connector or changing your lenses does not automatically void your warranty.

### **Exclusions:**

Installation errors, abuse, misuse or crash damage. You must be the original owner of the product and can supply proof of purchase.

Baja Designs manufactures its own products as well as resells products manufactured by others. Baja Designs makes no express or implied warranties on products not manufactured by Baja Designs including without limitation any warranties or merchantability and fitness for a purpose. We will, however, pass on all warranties made by the manufacturer, who has sole responsibility for performing such warranties.

Baja Designs will pay the freight if your product is less than 90 days old, otherwise defective products must be returned to Baja Designs, Inc., freight prepaid. At our option, we will repair or replace items in question and return them at no charge. If the identical product is no longer available, we will replace with a similar product of equal value. Baja Designs Inc. will not be responsible for any indirect or consequential damages in connection with defective merchandise.

Items purchased through a Baja Designs authorized dealer must be returned through the dealer. Only available on LED auxiliary lights and product must be in sellable condition at MSRP. Product that has been damaged in any way after the original purchase date will be excluded from this guarantee.

### **Indemnification:**

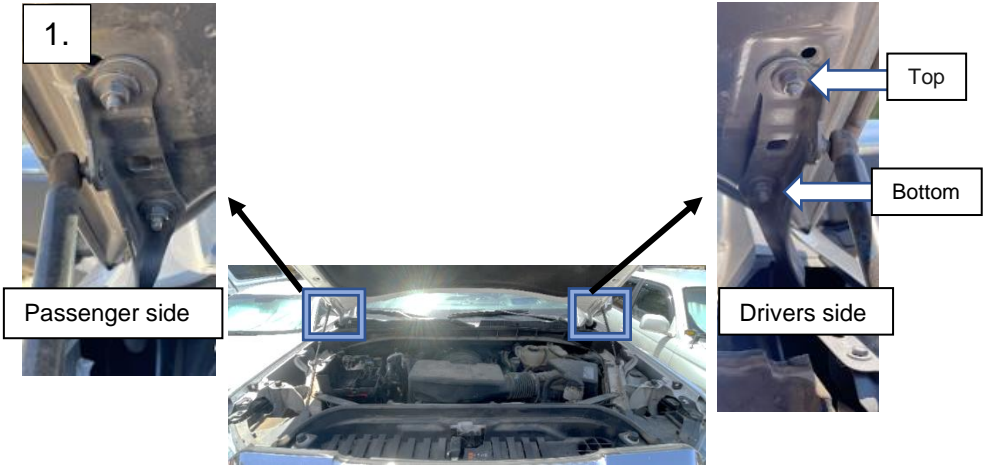
**Buyer hereby acknowledges off-roading, racing and driving at night are dangerous activities and that the products and/or supplies purchased from Baja Designs are used in an inherently dangerous activity that may endanger life and limb; and in no event shall the seller, or seller's heirs and assigns, be held liable for consequential damages, nor shall seller's liability on any claim for damages arising out of or connected with the sale, delivery, or use of purchased products and/or supplies exceed the purchase price of the products and/or supplies.**

**Buyer is responsible for ensuring that it uses the products (and its vehicle) in accordance with all applicable laws, regulations, guidelines, and standards of care. Buyer acknowledges that some products may only be used when off-roading, and Buyer will comply with all vehicle and road safety guidelines. Buyer is solely responsible for (and will indemnify and hold Bestop harmless for) any claims, losses, damages, fines, fees, costs, or other amounts arising out of Buyer's non-compliance with these provisions.**

## **Tools Required**

\*4mm Allen Key                      \*T15 Screwdriver                      \*3/4" drill bit  
\* 9/16", 1/2", 13mm, 7mm Socket   \*9/16" Wrench                      \*Masking Tape

1. Make sure the car is off, in park, and on parallel ground. Open your hood and note the hood hinge alignment, mark this spot with masking tape. With an assistant supporting the hood, use a 13mm socket to remove the two nuts holding the hood to the hinge.

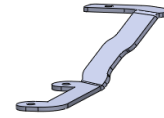


2. Place the driver side A-Pillar bracket onto the underside of the hood hinge studs. Once positioned, reinstall the removed nuts. Make sure hood alignment has not shifted.

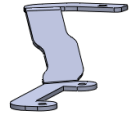
3. Once the drivers side bracket is installed, repeat steps (1) and (2) for the passenger side.



3.



Passenger side bracket

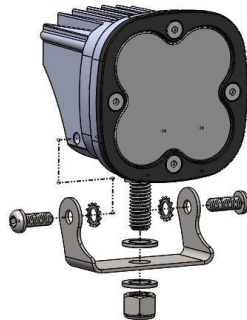


Driver side bracket

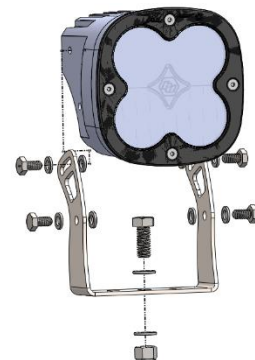
4. With a 4mm Allen key and 9/16" wrench and socket, assemble the light utilizing the included hardware bag as shown. Note that the assembly is different depending on whether you got the XL-80 kit or the Squadron kit.

4.

Squadron Assembly



XL Assembly



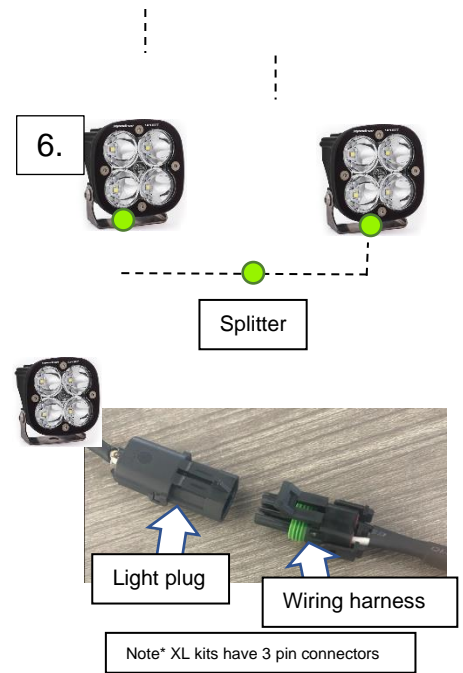
5. With the 9/16" wrench and socket, place the lights on both the driver and passenger side brackets as shown. Once the light is installed make sure to close your hood slowly and ensure the wire does not pinch or pull. A little interference between the trim and bracket is normal.

6. Plug both lights into the included main wiring harness, making sure to orient the locking tab details in the correct direction.



Passenger side bracket

Driver side bracket

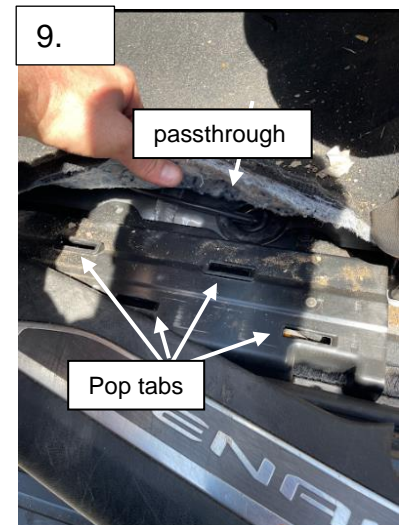
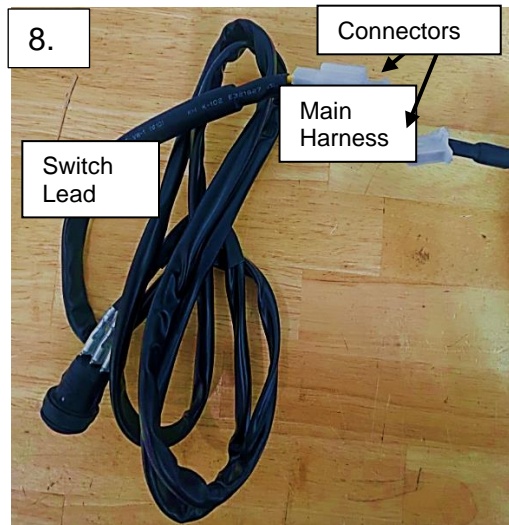


7. Follow the wiring diagram to connect your lights in the engine bay. Don't worry about the other wires/connections for now, we will connect the rest of it later.



8. Remove the short switch end from the main harness by unclipping the locking tab on the connector. Set this aside, we will use it later at the end.

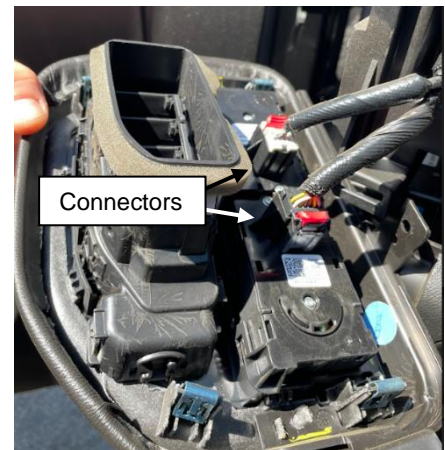
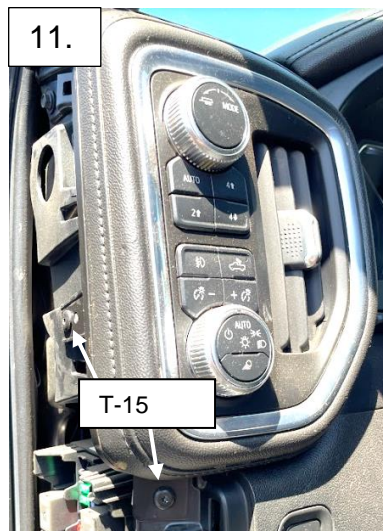
9. Remove the pop-tab panel at the driver's side footwell. Pull back the interior floorboard to reveal the driver's side parking brake cable passthrough on the floor. Unseat the passthrough grommet.



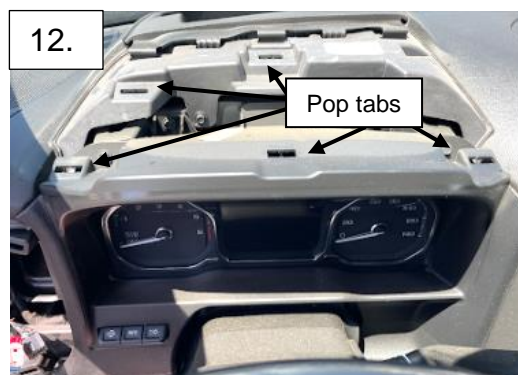
10. Begin removing the dash. First, pop off the pop tab cover on the side.



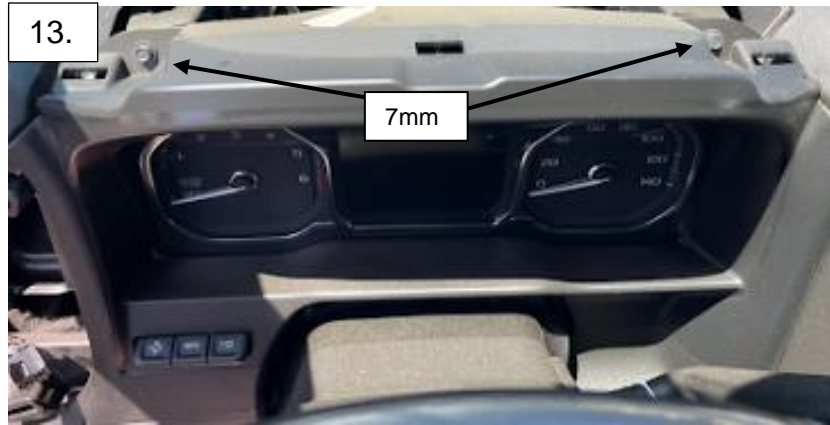
11. Remove the two T-15 buttonhead bolts and remove the upper left portion of the dash. You will need to disconnect two electrical connectors on this panel once it is out of the dash to get it fully removed, simply press down on the locking detent and pull apart.



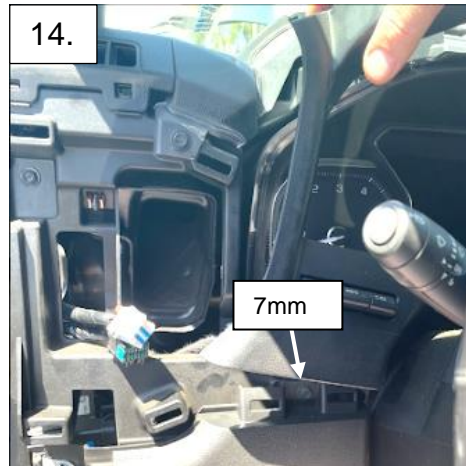
12. Remove the center top dash by pulling out the center piece, there are five pop tabs holding it in place.



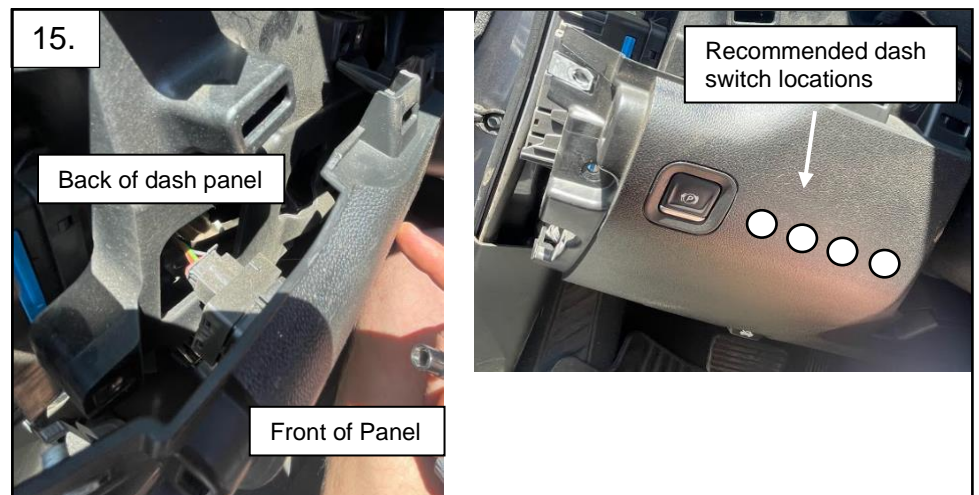
13. Remove the two 7mm bolts holding the upper dash panel. This will give you enough play to adjust this panel in the next step.



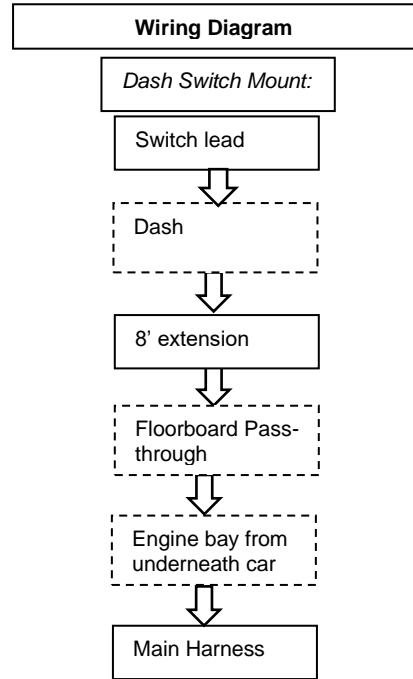
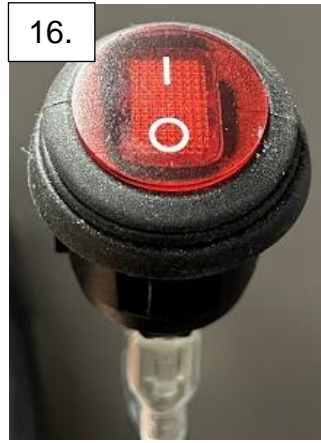
14. If you pull the lower tab of the panel we just removed the 7mm bolts from, you will see another 7mm bolt behind it that is holding the lower dash into place. Remove this bolt.



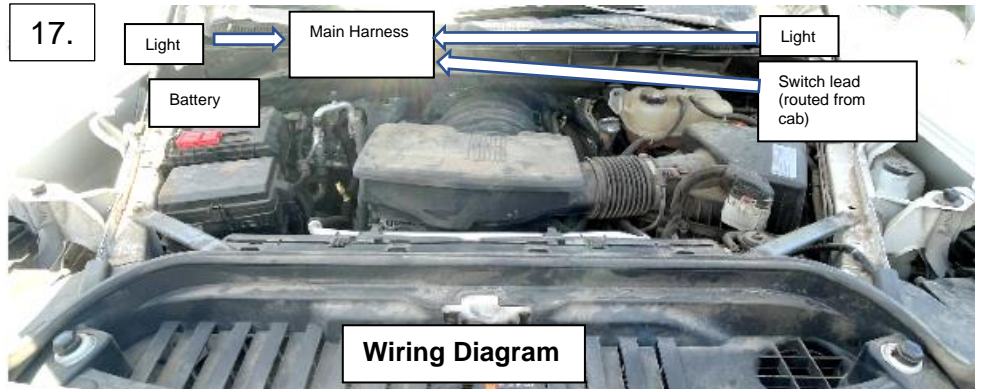
15. With the 7mm bolts removed, you can now expose the dash panel to see behind it. Choose a desired dash location and check behind the dash to make sure there is clearance. Some recommended locations are shown in the figure. Then, using a 3/4" drill or step bit, drill through the dash in the desired switch mount location. Install the switch lead that we removed from the main harness earlier into the dash.



16. Plug the 8 ft switch extension harness into the switch lead and mount the switch. Run the provided 8 ft switch lead extension harness behind the dash, along the parking brake cable under the door sill. Locate the parking brake cable pass through under the driver's side front floorboard and run the connector end through. Run this wire all the way under the car and up into the engine bay. Ensure your switch is in the off position before moving to the next step. Replace parking break grommet.

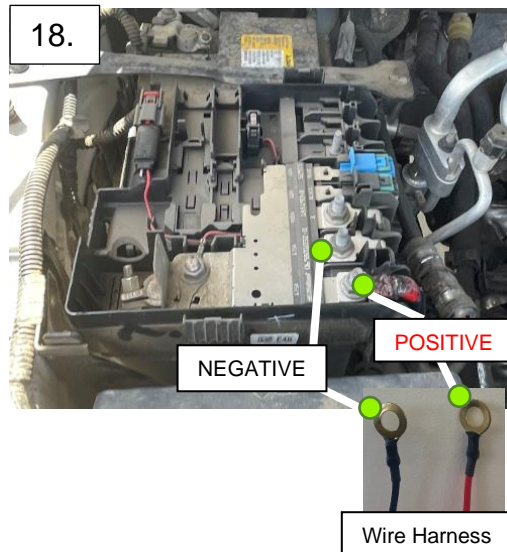


17. Connect the main harness switch plug into the switch connector from the cab.



18. Remove the plastic cover on top of the battery\*. Using a 1/2" socket, remove the positive (red) and negative (black) battery terminal bolts. Using the main harness provided in your kit, connect the positive (red wire) O-ring terminal to the positive battery lead and reconnect the positive battery terminal bolt. Then, connect the negative (Black wire) O-ring terminal to the negative battery lead and reconnect the negative battery terminal.

\*Battery wiring labeled in Step 18.



\*Tie all wires away from sharp, hot, and/or rotating components.

\* Re-torque all the fasteners after 100 miles.

\*Your install is now complete! Thank you for choosing Baja Designs.





